

VERDANA

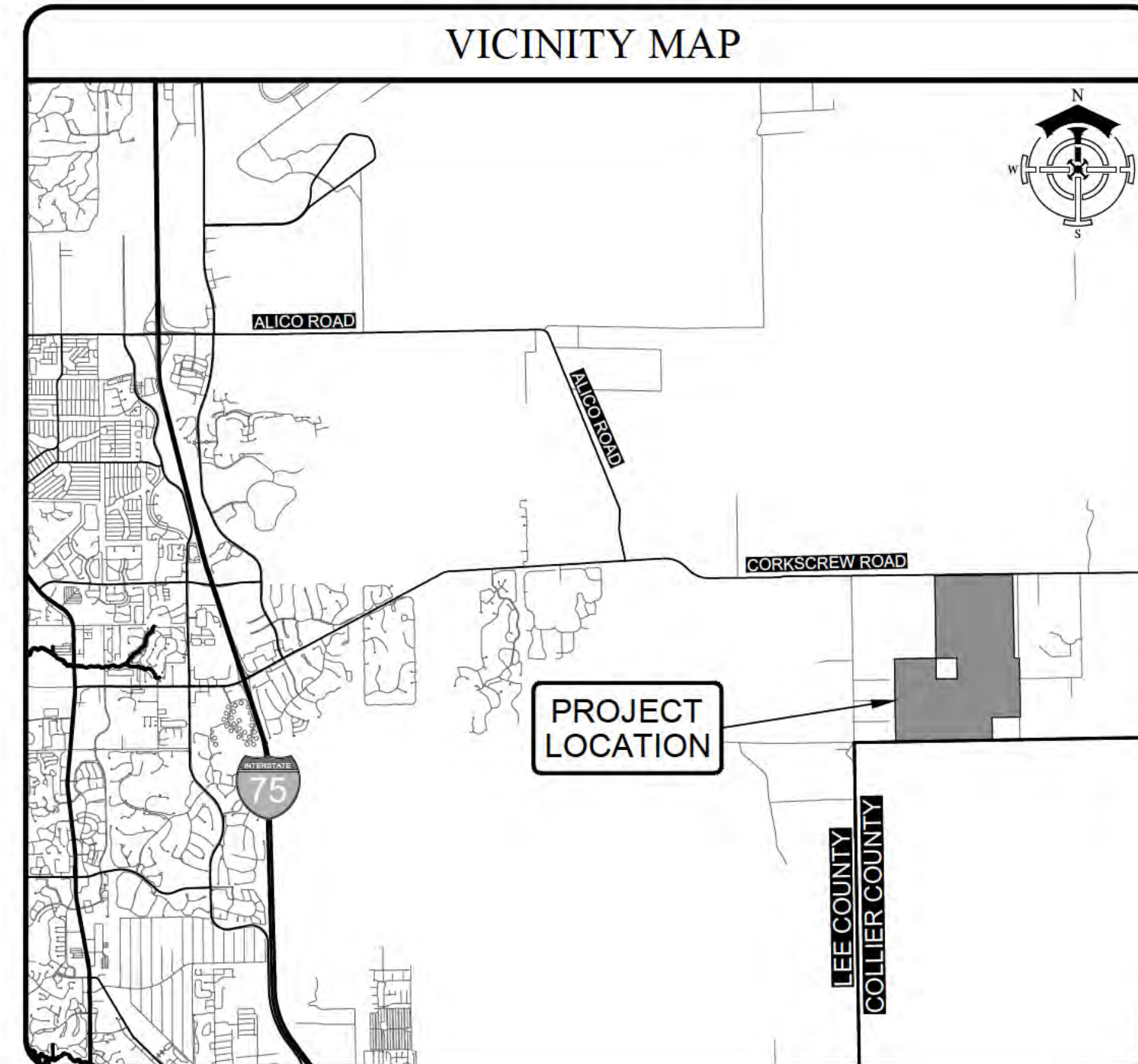
ENVIRONMENTAL RESOURCE PERMIT PLANS

PART OF SECTIONS 29, 31 & 32, TOWNSHIP 46 SOUTH, RANGE 27 EAST LEE COUNTY, FLORIDA

PROJECT INFORMATION	
PARCEL ID	29-46-27-00-00001.0000, 32-46-27-00-00001.1000, 31-46-27-00-00001.1000

CONSULTANTS		
ENGINEER	ENVIRONMENTAL	SURVEY
DELISI FITZGERALD INC 1605 HENDRY ST. FORT MYERS, FL 33901 (239) 418-0691	PASSARELLA AND ASSOCIATES INC 13620 METROPOLIS AVE., SUITE 200 FORT MYERS, FL 33912 (239) 274-0067	BARRACO AND ASSOCIATES INC 2271 MCGREGOR BLVD., SUITE 100 FORT MYERS, FL 33901 (239) 461-3170

UTILITY PROVIDERS		
WATER & SEWER	ELECTRIC	TELEPHONE
LEE COUNTY UT LITIES 1500 MONROE STREET FORT MYERS, FL 33901 (239) 533-8160	FLORIDA POWER AND LIGHT 2625 THOMPSON ST. FORT MYERS, FL 33901 (239) 332-9154	CENTURYLINK 2620 CARGO ST FORT MYERS, FL 33902 (239) 336-2008
CABLE	GAS	SOLID WASTE DISPOSAL
COMCAST CABLE 12941 CORPORATE LAKES DR. FORT MYERS, FL 33913 (239) 432-1805	TECO GAS 5901 ENTERPRISE PKWY. FORT MYERS, FL 33905 (239) 690-5513	WASTE PRO 13110 RICKENBACKER PKWY. FORT MYERS, FL 33913 (239) 337-0800
FIRE DISTRICT		
ESTERO FIRE DISTRICT 21500 THREE OAKS PKWY. ESTERO, FL 33928 (239) 390-8000		



SHEET INDEX	
NO.	DESCRIPTION
1	COVER SHEET, VICINITY MAP AND INDEX
2	AERIAL PHOTOGRAPH AND EXISTING CONDITIONS
3	MASTER DRAINAGE PLAN
4-22	DETAILED DRAINAGE PLANS
23-24	TYPICAL SECTIONS
25	DETAILS
26-27	CONTROL STRUCTURE DETAILS
28	EROSION CONTROL PLAN

CONSTRUCTION INFORMATION

Always call 811 two full business days before you dig

Sunshine811.com

CALL BEFORE YOU DIG: 811

DELISI FITZGERALD, INC.
Planning - Engineering - Project Management

1605 Hendry Street
Fort Myers, FL 33901
239-418-0691 • 239-418-0692 fax
Florida Certificate of Authorization:
Engineering, L.S. # 26976

ENGINEER OF RECORD:
ANDREW D. FITZGERALD, P.E. (FOR THE FIRM)
FLORIDA P.E. NO. 56776

NOT VALID WITHOUT SEAL, SIGNATURE AND DATE

OWNER / DEVELOPER:
PAN TERRA HOLDINGS, LTD
150 ALHAMBRA CIRCLE #925
CORAL GABLES, FL 33134

PROJECT:
VERDANA

PLAN REVISIONS	DESCRIPTION
#	DATE

COVER SHEET, VICINITY MAP AND INDEX

Project Manager:	ADF
Drawn By:	CAS
Checked By:	ADF
Project Number:	21375
Part of Section(s):	29,31,32
Township:	46 S Range: 27 E
County, State:	LEE COUNTY, FL

Status:
FOR PERMITTING PURPOSES ONLY
NOT FOR CONSTRUCTION

Sheet Number: 1

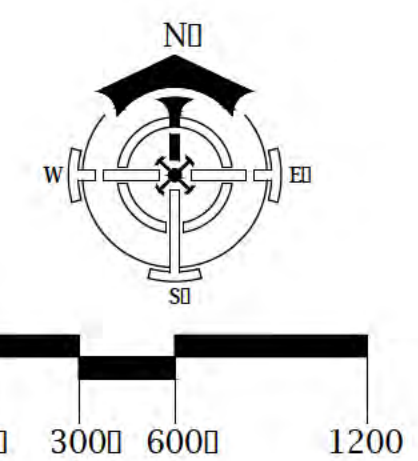
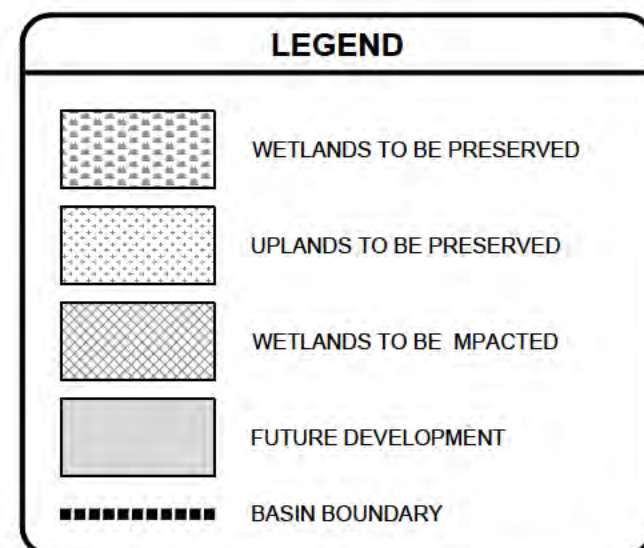
- GENERAL DRAINAGE NOTES:**
1. THE LENGTH OF ALL STORM DRAIN PIPES SHOWN ARE APPROXIMATE AND ARE MEASURED FROM THE INSIDE FACE OF STRUCTURE TO THE INSIDE FACE OF THE NEXT STRUCTURE.
 2. EXISTING OFF-SITE DRAINAGE PATTERNS SHALL BE MAINTAINED DURING THE COURSE OF CONSTRUCTION.
 3. THE LOCATION OF THE DRAINAGE STRUCTURES SHOWN ON THE PLANS MAY BE FIELD ADJUSTED TO PRESERVE ANY EXISTING VEGETATION, AS APPROVED BY THE ENGINEER.
 4. DURING CONSTRUCTION, ALL NLET OPENINGS SHALL BE COVERED WITH FILTER FABRIC (MIRAF140N, OR APPROVED EQUAL) TO PREVENT DEBRIS FROM FALLING INTO THE NLET.
 5. THE CONTRACTOR SHALL ADJUST ALL PROPOSED ELEVATIONS TO MEET THE EXISTING GRADES AS NEEDED.
 6. ALL STORM DRAINAGE PIPE SHALL BE REINFORCED CONCRETE PIPE (RCP), UNLESS OTHERWISE NOTED.
 7. PROPOSED GRADES IN OPEN SPACE AREAS ARE TOP OF SOD.
 8. THE SUBJECT PARCEL IS LOCATED IN FLOOD ZONE 'X' BASED ON FLOOD INSURANCE RATE COMMUNITY PANEL 12071C0625F, AUGUST 28, 2008. THERE IS NO SPECIAL FLOOD HAZARD ELEVATION ASSOCIATED WITH THIS ZONE.
 9. THERE ARE NO KNOWN IMPACTS TO SURFACE GROUND WATER RESULTING FROM THE PROJECT.

LAND USE SUMMARY								
CATEGORY	BASIN 1	BASIN 2	BASIN 3	BASIN 4	BASIN 5	BASIN 6	BASIN 7	BASIN 8
LAKE	21.93 AC.	11.51 AC.	14.29 AC.	13.56 AC.	29.30 AC.	32.85 AC.	41.94 AC.	40.02 AC.
RESIDENTIAL								
PAVEMENT	10.73 AC.	6.93 AC.	8.06 AC.	9.02 AC.	13.48 AC.	12.16 AC.	7.42 AC.	10.58 AC.
BUILDING	13.40 AC.	17.34 AC.	12.62 AC.	18.14 AC.	20.40 AC.	29.71 AC.	21.45 AC.	22.82 AC.
PERVIOUS	32.35 AC.	34.90 AC.	31.23 AC.	33.06 AC.	57.71 AC.	56.02 AC.	48.55 AC.	57.35 AC.
COMMERCIAL / AMENITY ⁽¹⁾								
PAVEMENT	2.97 AC.	—	—	5.77 AC.	—	2.56 AC.	—	—
BUILDING	1.78 AC.	—	—	3.46 AC.	—	1.63 AC.	—	—
PERVIOUS	1.17 AC.	—	—	2.31 AC.	—	1.02 AC.	—	—
TOTAL	84.33 AC.	70.68 AC.	66.20 AC.	85.32 AC.	120.89 AC.	135.85 AC.	119.36 AC.	130.77 AC.

(1) ASSUMED PERCENTAGES OF CONCEPTUAL COMMERCIAL / AMENITY AREAS: PAVEMENT = 50%, BUILDING = 30%, PERVIOUS = 20%.

OVERALL LAND USE SUMMARY		
CATEGORY	AREA	PERCENTAGE
LAKE	205.40 AC.	14%
PAVEMENT	89.68 AC.	6%
BUILDING	162.65 AC.	11%
PERVIOUS	355.67 AC.	25%
OUTSIDE OF WATER MANAGEMENT AREA	647.38 AC.	44%
TOTAL	1,460.78 AC.	100%

SURFACE WATER MANAGEMENT PARAMETERS								
	BASIN 1	BASIN 2	BASIN 3	BASIN 4	BASIN 5	BASIN 6	BASIN 7	BASIN 8
CONTROL ELEVATION (FT-NAVD)	26.50	26.50	26.50	26.00	25.00	24.00	22.50	23.50
5-YEAR, 1 DAY STORM EVENT PEAK STAGE (FT-NAVD)	27.63	28.03	27.78	27.63	26.20	25.19	23.38	24.47
25-YEAR, 3 DAY STORM EVENT PEAK STAGE (FT-NAVD)	28.52	29.00	28.72	28.59	27.12	26.14	24.15	25.30
100-YEAR, 3 DAY STORM EVENT PEAK STAGE (FT-NAVD)	29.06	29.47	29.24	29.04	27.63	26.68	24.69	25.86
MINIMUM ROAD ELEVATION (FT-NAVD)	28.50	28.50	28.50	28.25	27.00	26.00	24.50	25.50
MINIMUM BERM ELEVATION (FT-NAVD)	28.00	29.50	29.00	29.00	27.75	26.50	24.75	25.75
MINIMUM FINISHED FLOOR ELEVATION (FT-NAVD)	29.50	29.50	29.75	29.00	28.00	27.00	25.50	26.50



DELISI FITZGERALD, INC.
 Planning - Engineering - Project Management
 1605 Hendry Street
 Fort Myers, FL 33901
 239-418-0691 • 239-418-0692 fax
 Florida Certificate of Authorization:
 Engineering, LS # 26976

ENGINEER OF RECORD:
 ANDREW D. FITZGERALD, P.E. (FOR THE FIRM)
 FLORIDA P.E. NO. 56776

OWNER / DEVELOPER:
PAN TERRA HOLDINGS, LTD
 150 ALHAMBRA CIRCLE #925
 CORAL GABLES, FL 33134

VERDANA

PLAN REVISIONS	DESCRIPTION
#	DATE

MASTER DRAINAGE PLAN

Project Manager: ADF
 Drawn By: CAS
 Checked By: ADF
 Project Number: 21375
 Part of Section(s): 29.31.32
 Township: 46 S | Range: 27 E
 County, State: LEE COUNTY, FL

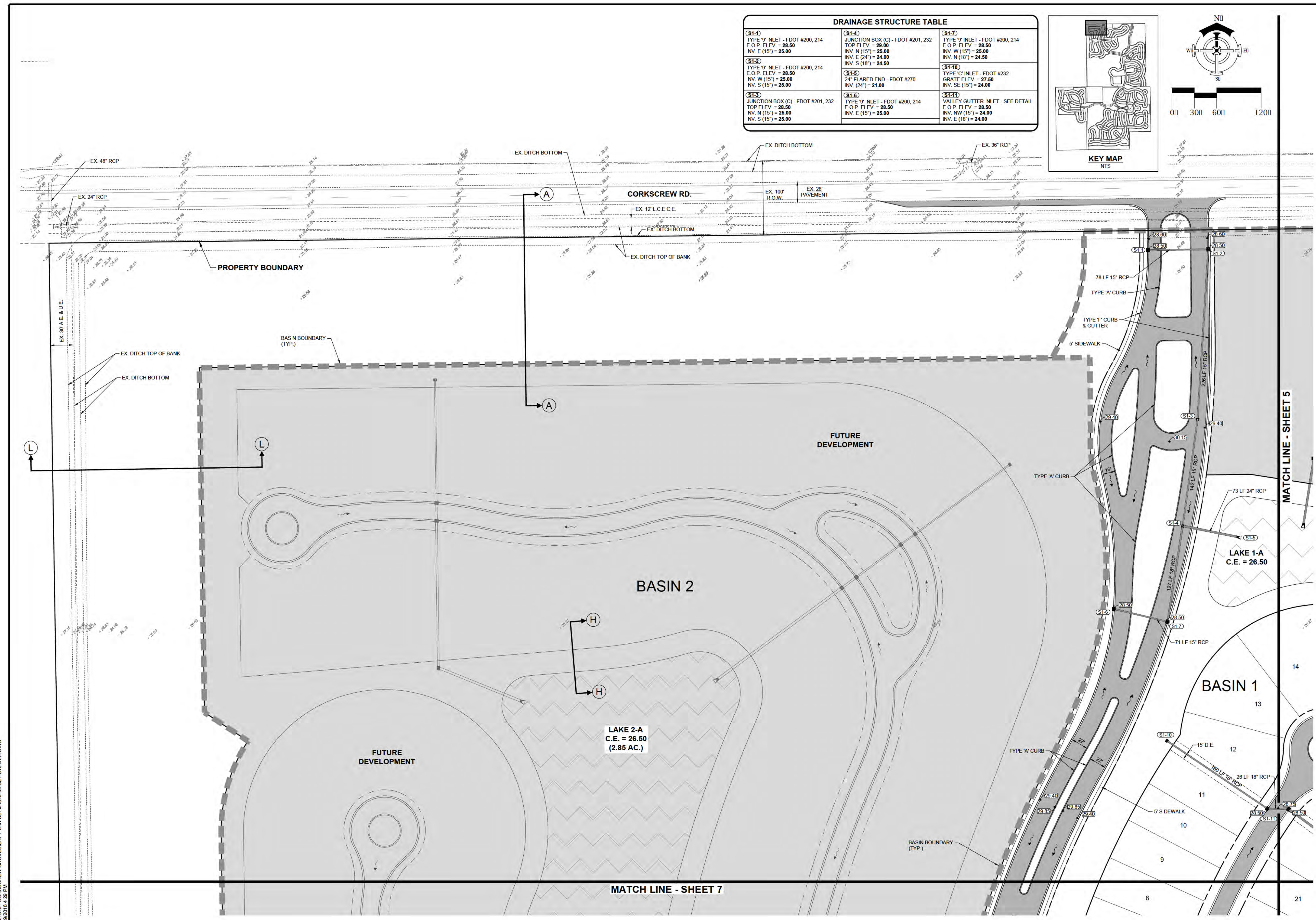
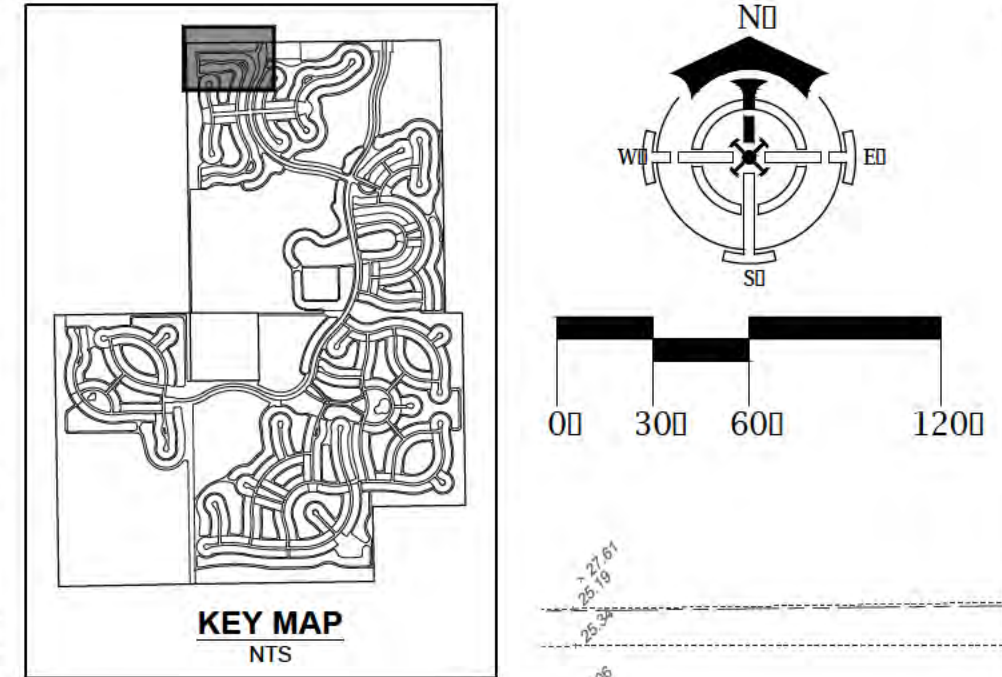
Status:
 FOR PERMITTING PURPOSES ONLY
 NOT FOR CONSTRUCTION

Sheet Number: 3

PROJECT DATUM
 NAVD 88

6/2/13/15 - CORKSCREW GROVE/SEWERPLAN SET/21375-03-MDP1.DWG
 2/23/2014 4:28 PM

DRAINAGE STRUCTURE TABLE		
(S1-1) TYPE 'Y' NILET - FDOT #200, 214 E.O.P. ELEV. = 28.50 INV. E (15') = 25.00	(S1-4) JUNCTION BOX (C) - FDOT #201, 232 TOP ELEV. = 29.00 INV. N (15') = 25.00 INV. E (24') = 24.00 INV. S (18') = 24.50	(S1-7) TYPE 'Y' NILET - FDOT #200, 214 E.O.P. ELEV. = 28.50 INV. W (15') = 25.00 INV. N (18') = 24.50
(S1-2) TYPE 'Y' NILET - FDOT #200, 214 E.O.P. ELEV. = 28.50 INV. W (15') = 25.00 INV. S (15') = 25.00	(S1-5) 24" FLARED END - FDOT #270 INV. (24') = 21.00	(S1-10) TYPE 'C' NILET - FDOT #232 GRATE ELEV. = 27.50 INV. SE (15') = 24.00
(S1-3) JUNCTION BOX (C) - FDOT #201, 232 TOP ELEV. = 28.50 INV. N (15') = 25.00 INV. S (15') = 25.00	(S1-6) TYPE 'Y' NILET - FDOT #200, 214 E.O.P. ELEV. = 28.50 INV. E (15') = 25.00	(S1-11) VALLEY GUTTER NILET - SEE DETAIL E.O.P. ELEV. = 28.50 INV. NW (15') = 24.00 INV. E (18') = 24.00



DELISI FITZGERALD, INC.
 Planning - Engineering - Project Management
 1605 Hendry Street
 Fort Myers, FL 33901
 239-418-0691 • 239-418-0692 fax
 Florida Certificate of Authorization:
 Engineering, LS # 26976

ENGINEER OF RECORD:
 ANDREW D. FITZGERALD, P.E. (FOR THE FIRM)
 FLORIDA P.E. NO. 56776
 NOT VALID WITHOUT SEAL, SIGNATURE AND DATE

OWNER / DEVELOPER:
PAN TERRA HOLDINGS, LTD
 150 ALHAMBRA CIRCLE #925
 CORAL GABLES, FL 33134
 PROJECT:
VERDANA

PLAN REVISIONS	DESCRIPTION
#	DATE

DETAILED DRAINAGE PLAN 'A'

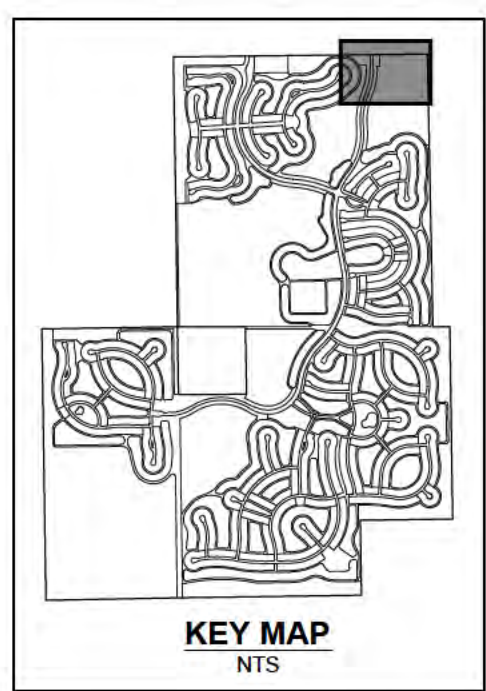
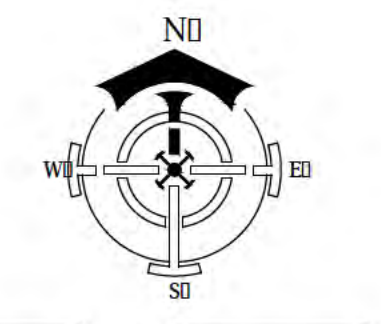
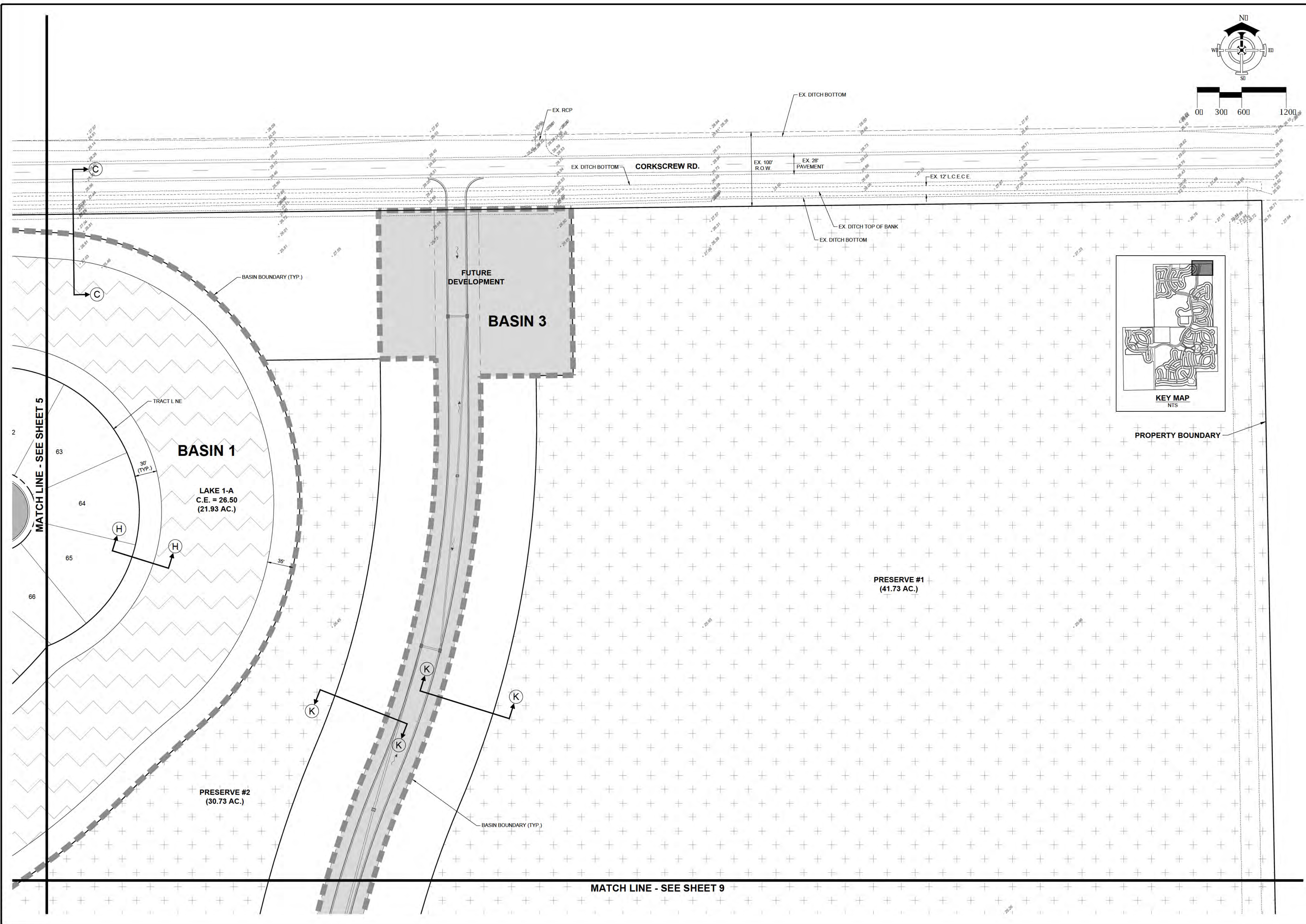
Project Manager: ADF
 Drawn By: CAS
 Checked By: ADF
 Project Number: 21375
 Part of Section(s): 29.31.32
 Township: 46 S | Range: 27 E
 County, State: LEE COUNTY, FL

Status:
 FOR PERMITTING PURPOSES ONLY
 NOT FOR CONSTRUCTION

Sheet Number: 4

6/2/17/5 - CORKSCREW GROVES/PLAN SET/21375-04-DET/DRAINAGE.DWG
 2/23/2016 4:25 PM

6/2/1375 - CORKSCREW GROVES/PLAN SET/1375-06-DET-DRM-NC.DWG
2/23/13 4:31 PM



DELISI FITZGERALD, INC.
Planning - Engineering - Project Management
1605 Hendry Street
Fort Myers, FL 33901
239-418-0691 • 239-418-0692 fax
Florida Certificate of Authorization:
Engineering, L.S. # 26976

ENGINEER OF RECORD:
ANDREW D. FITZGERALD, P.E. (FOR THE FIRM)
FLORIDA P.E. NO. 56776
NOT VALID WITHOUT SEAL, SIGNATURE AND DATE

OWNER / DEVELOPER:
PAN TERRA HOLDINGS, LTD
150 ALHAMBRA CIRCLE #925
CORAL GABLES, FL 33134
PROJECT:
VERDANA

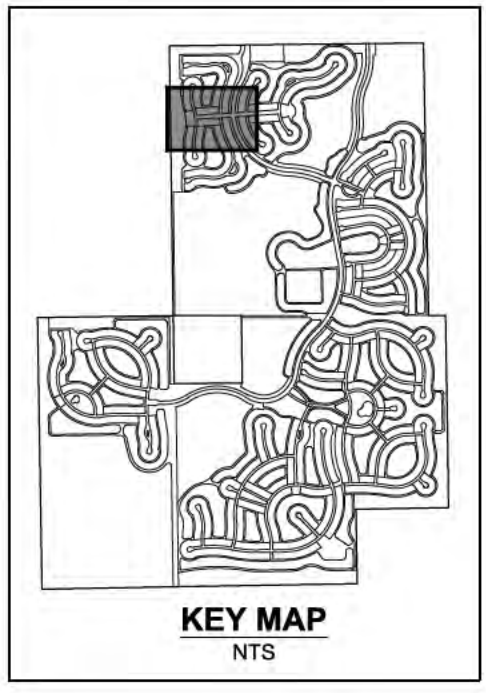
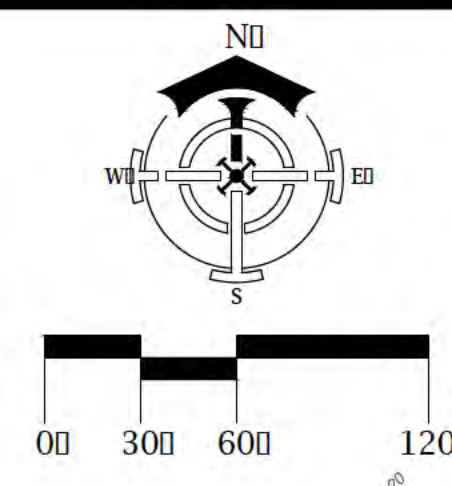
PLAN REVISIONS	DESCRIPTION
#	DATE

DETAILED DRAINAGE PLAN 'C'

Project Manager:	ADF
Drawn By:	CAS
Checked By:	ADF
Project Number:	21375
Part of Section(s):	29, 31, 32
Township:	46 S Range: 27 E
County, State:	LEE COUNTY, FL

Status:
FOR PERMITTING PURPOSES ONLY
NOT FOR CONSTRUCTION

Sheet Number: 6



DRAINAGE STRUCTURE TABLE	
(S1-14) TYPE 'Y' INLET - FDOT #200, 214 E.O.P. ELEV. = 28.50 INV. E (15') = 25.00	(S1-26) TYPE 'Y' INLET - FDOT #200, 214 E.O.P. ELEV. = 28.50 INV. W (15') = 25.00 INV. E (18') = 24.00
(S1-15) TYPE 'Y' INLET - FDOT #200, 214 E.O.P. ELEV. = 28.50 INV. W (15') = 25.00 INV. E (18') = 24.50	(S1-28) TYPE 'C' INLET - FDOT #232 GRATE ELEV. = 27.50 INV. W (18') = 24.00 INV. SE (24') = 24.00 INV. N (18') = 24.00
(S1-16) TYPE 'C' INLET - FDOT #232 GRATE ELEV. = 27.50 INV. W (18') = 24.50 INV. N (18') = 24.50	(S1-27) TYPE 'C' INLET - FDOT #232 GRATE ELEV. = 27.50 INV. NW (24') = 24.00 INV. NE (24') = 24.00
(S1-17) TYPE 'C' INLET - FDOT #232 GRATE ELEV. = 27.50 INV. S (18') = 24.50 INV. E (18') = 24.50	(S1-28) VALLEY GUTTER NLET - SEE DETAIL E.O.P. ELEV. = 28.50 INV. W (24') = 24.00 INV. SW (24') = 24.00
(S1-18) VALLEY GUTTER NLET - SEE DETAIL E.O.P. ELEV. = 28.50 INV. W (18') = 24.50 INV. E (24') = 24.00	(S1-29) VALLEY GUTTER NLET - SEE DETAIL E.O.P. ELEV. = 28.50 INV. SW (24') = 24.00 INV. NE (30') = 23.50
(S1-21) TYPE 'Y' INLET - FDOT #200, 214 E.O.P. ELEV. = 29.00 INV. S (15') = 25.00	(S2-1) 30' FLARED END - FDOT #270 INV. (30') = 20.00
(S1-22) TYPE 'Y' INLET - FDOT #200, 214 E.O.P. ELEV. = 29.00 INV. N (15') = 25.00 INV. W (15') = 24.00	(S2-2) TYPE 'Y' INLET - FDOT #200, 214 E.O.P. ELEV. = 28.50 INV. N (30') = 20.00 INV. S (30') = 20.00 INV. E (15') = 2.75
(S1-23) TYPE 'C' INLET - FDOT #232 GRATE ELEV. = 28.50 INV. N (15') = 24.00 INV. S (18') = 24.00	(S2-3) TYPE 'Y' INLET - FDOT #200, 214 E.O.P. ELEV. = 28.50 INV. N (30') = 20.00 INV. S (30') = 20.00
(S1-24) TYPE 'Y' INLET - FDOT #200, 214 E.O.P. ELEV. = 28.50 INV. E (15') = 25.00	(S2-4) 30' FLARED END - FDOT #270 INV. (30') = 20.00
(S1-22A) JUNCTION BOX (C) - FDOT #201, 232 E.O.P. ELEV. = 29.70 INV. E (15') = 24.00 INV. S (15') = 24.00	

MATCH LINE - SHEET 4

LAKE 2-A
C.E. = 26.50
(2.85 AC.)

BASIN 2

BASIN 1

LAKE 2-B
C.E. = 26.50
(4.64 AC.)

MATCH LINE - SHEET 11

MATCH LINE - SHEET 8

DELISI FITZGERALD, INC.
Planning - Engineering - Project Management
1605 Hendry Street
Fort Myers, FL 33901
239-418-0691 • 239-418-0692 fax
Florida Certificate of Authorization:
Engineering, L.S. # 26976

ENGINEER OF RECORD:
ANDREW D. FITZGERALD, P.E. (FOR THE FIRM)
FLORIDA P.E. NO. 56776
NOT VALID WITHOUT SEAL, SIGNATURE AND DATE

OWNER / DEVELOPER:
PAN TERRA HOLDINGS, LTD
150 ALHAMBRA CIRCLE #925
CORAL GABLES, FL 33134
PROJECT:
VERDANA

PLAN REVISIONS	DESCRIPTION
#	
DATE	

DETAILED DRAINAGE PLAN 'D'

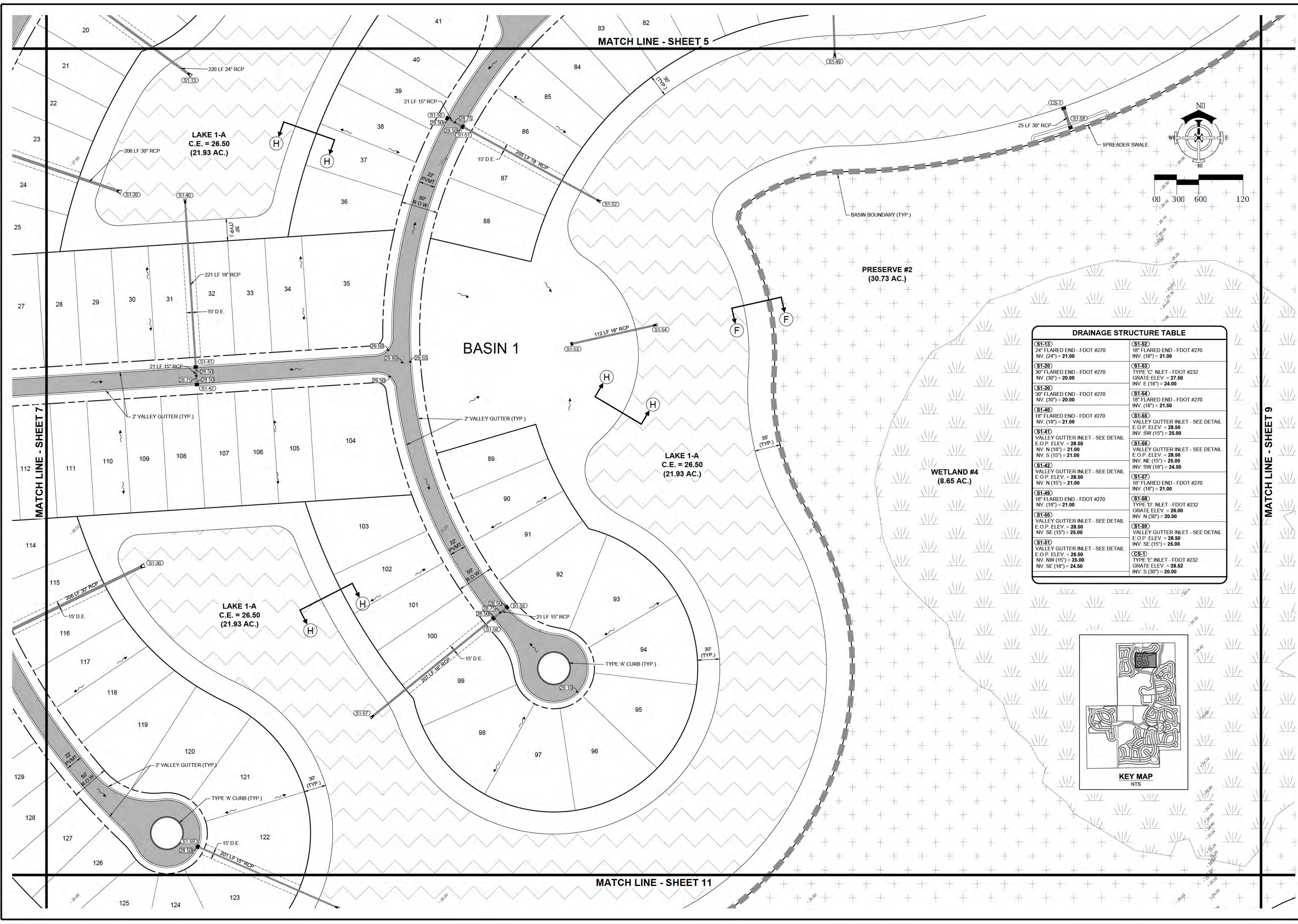
Project Manager:	ADF
Drawn By:	CAS
Checked By:	ADF
Project Number:	21375
Part of Section(s):	29.31.32
Township:	46 S Range:
County, State:	LEE COUNTY, FL

Status:
FOR PERMITTING PURPOSES ONLY
NOT FOR CONSTRUCTION

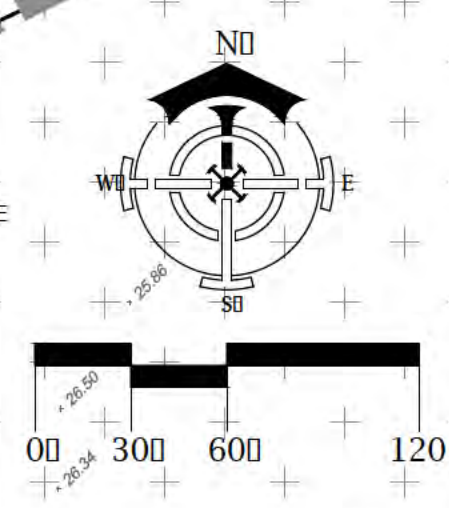
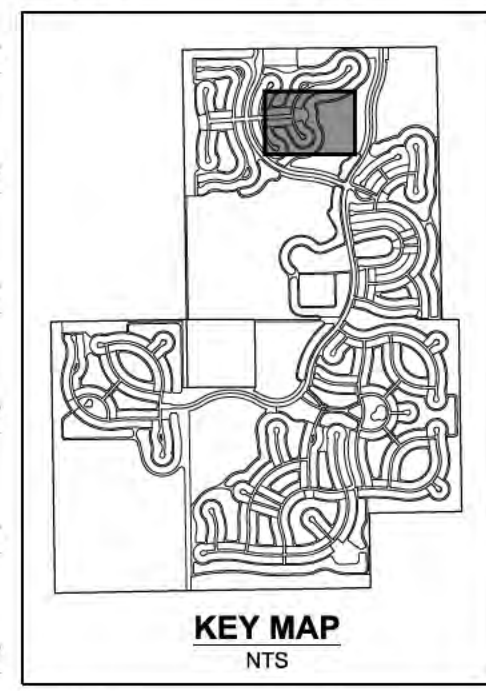
Sheet Number: 7

6/2/13/15 - CORNSCREW GROVES/PLAN SET/21375-07-DET/DRM/AND DWG 2/23/15 1:31 PM

6/2/13/16 - CORNSCREW GROVES/PLAN SET/1375-08-DET-DRAINAGE.DWG
 2/23/10 10:54 AM



DRAINAGE STRUCTURE TABLE	
(S1-13) 24" FLARED END - FDOT #270 INV. (24") = 21.00	(S1-52) 18" FLARED END - FDOT #270 INV. (18") = 21.00
(S1-20) 30" FLARED END - FDOT #270 INV. (30") = 20.00	(S1-53) TYPE 'C' INLET - FDOT #232 GRATE ELEV. = 27.50 INV. E. (18") = 24.00
(S1-30) 30" FLARED END - FDOT #270 INV. (30") = 20.00	(S1-54) 18" FLARED END - FDOT #270 INV. (18") = 21.50
(S1-40) 18" FLARED END - FDOT #270 INV. (18") = 21.00	(S1-55) VALLEY GUTTER INLET - SEE DETAIL E.O.P. ELEV. = 28.50 INV. N (18") = 21.00 INV. S (15") = 21.00
(S1-41) VALLEY GUTTER INLET - SEE DETAIL E.O.P. ELEV. = 28.50 INV. N (18") = 21.00 INV. S (15") = 21.00	(S1-56) VALLEY GUTTER INLET - SEE DETAIL E.O.P. ELEV. = 28.50 INV. NE (15") = 25.00 INV. SW (18") = 24.50
(S1-42) VALLEY GUTTER INLET - SEE DETAIL E.O.P. ELEV. = 28.50 INV. N (15") = 21.00	(S1-57) 18" FLARED END - FDOT #270 INV. (18") = 21.00
(S1-49) 18" FLARED END - FDOT #270 INV. (18") = 21.00	(S1-58) TYPE 'F' INLET - FDOT #232 GRATE ELEV. = 26.00 INV. N (30") = 20.00
(S1-50) VALLEY GUTTER INLET - SEE DETAIL E.O.P. ELEV. = 28.50 INV. NW (15") = 25.00	(S1-59) VALLEY GUTTER INLET - SEE DETAIL E.O.P. ELEV. = 28.50 INV. SE (15") = 25.00
(S1-51) VALLEY GUTTER INLET - SEE DETAIL E.O.P. ELEV. = 28.50 INV. NW (15") = 25.00 INV. SE (18") = 24.50	(S1-60) TYPE 'E' INLET - FDOT #232 GRATE ELEV. = 28.52 INV. S (30") = 20.00



DELISI FITZGERALD, INC.
 Planning - Engineering - Project Management
 1605 Hendry Street
 Fort Myers, FL 33901
 239-418-0691 • 239-418-0692 fax
 Florida Certificate of Authorization:
 Engineering, L.S. # 26976

ENGINEER OF RECORD:
 ANDREW D. FITZGERALD, P.E. (FOR THE FIRM)
 FLORIDA P.E. NO. 56776
 NOT VALID WITHOUT SEAL, SIGNATURE AND DATE

OWNER / DEVELOPER:
PAN TERRA HOLDINGS, LTD
 150 ALHAMBRA CIRCLE #905
 CORAL GABLES, FL 33134
 PROJECT:
VERDANA

PLAN REVISIONS	DESCRIPTION
#	DATE

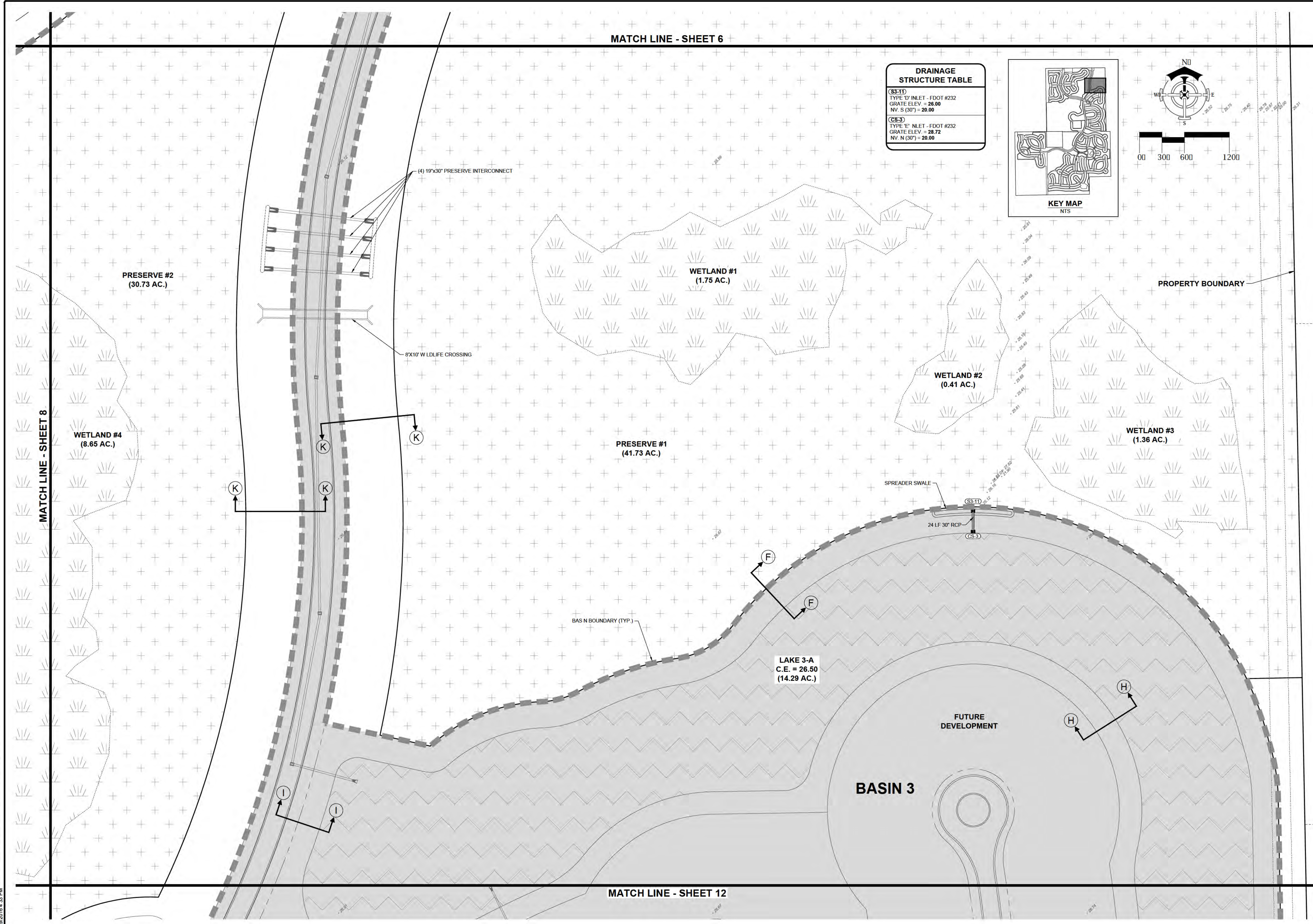
DETAILED DRAINAGE PLAN 'E'

Project Manager:	ADF
Drawn By:	CAS
Checked By:	ADF
Project Number:	21375
Part of Section(s):	29,31,32
Township:	46 S Range: 27 E
County, State:	LEE COUNTY, FL

Status:
 FOR PERMITTING PURPOSES ONLY
 NOT FOR CONSTRUCTION

Sheet Number: 8

6/2/13/16 - CORNSCREW GROVES/PLAN SET/21375-09-DET-DRAIN-F.DWG
 2/23/16 4:33 PM

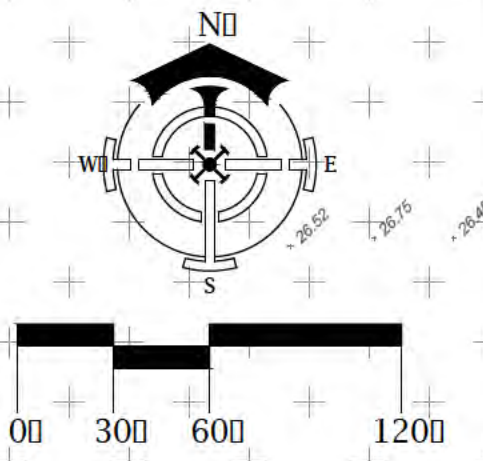
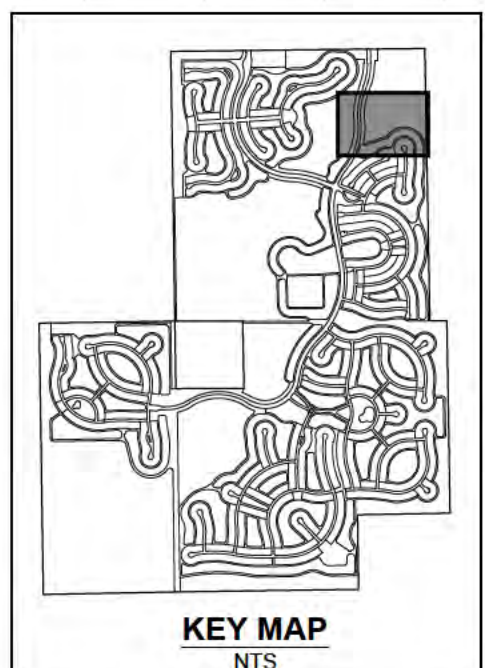


MATCH LINE - SHEET 6

MATCH LINE - SHEET 12

DRAINAGE STRUCTURE TABLE

(S3-1)	TYPE 'D' INLET - FDOT #232 GRATE ELEV = 28.00 NV. S (30') = 20.00
(S3-3)	TYPE 'E' INLET - FDOT #232 GRATE ELEV = 28.72 NV. N (30') = 20.00



DELISI FITZGERALD, INC.
 Planning - Engineering - Project Management
 1605 Hendry Street
 Fort Myers, FL 33901
 239-418-0691 • 239-418-0692 fax
 Florida Certificate of Authorization:
 Engineering, L.S. # 26976

ENGINEER OF RECORD:
 ANDREW D. FITZGERALD, P.E. (FOR THE FIRM)
 FLORIDA P.E. NO. 56776
 NOT VALID WITHOUT SEAL, SIGNATURE AND DATE

OWNER / DEVELOPER:
PAN TERRA HOLDINGS, LTD
 150 ALHAMBRA CIRCLE #925
 CORAL GABLES, FL 33134

PROJECT:
VERDANA

PLAN REVISIONS

#	DATE	DESCRIPTION

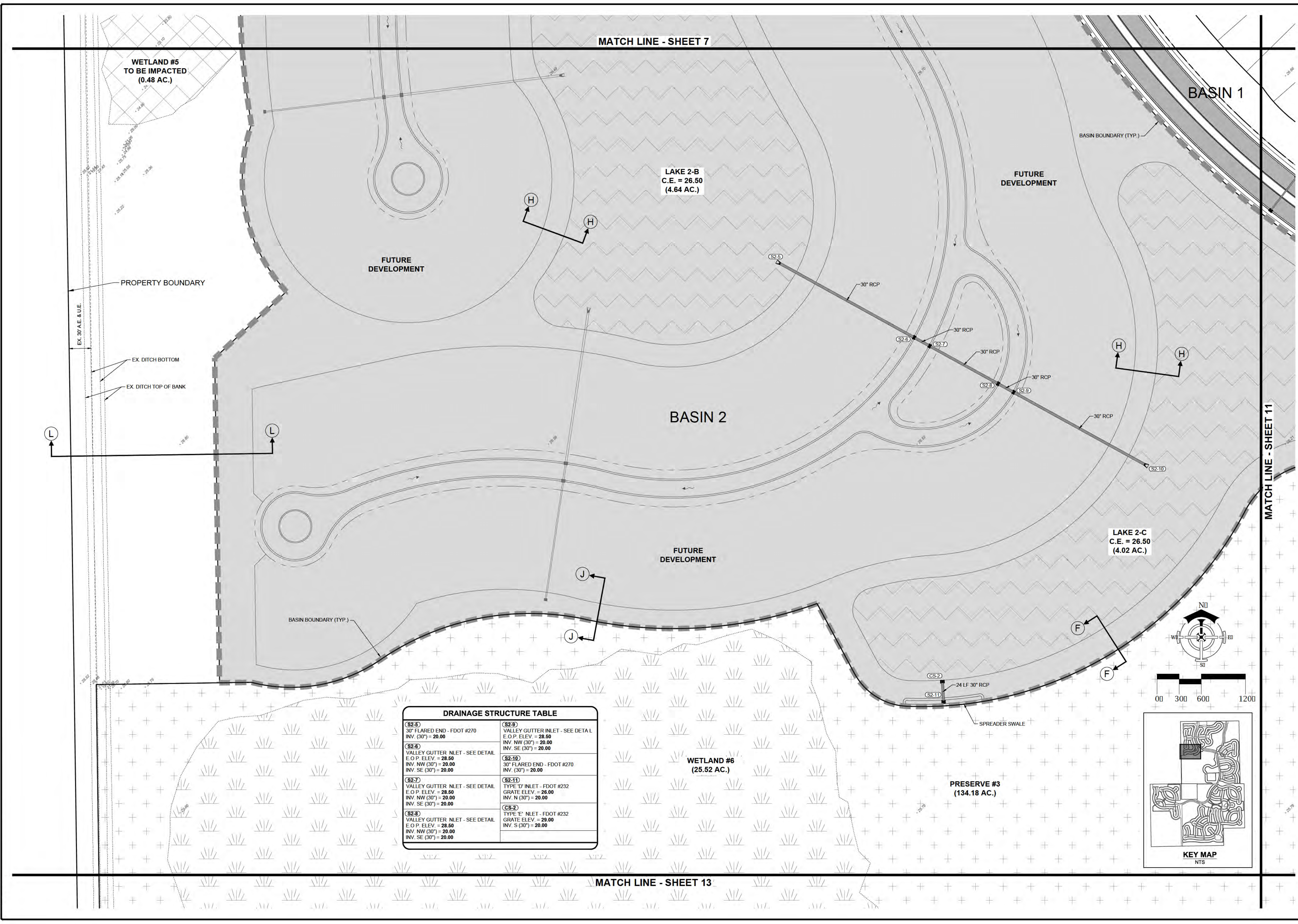
DETAILED DRAINAGE PLAN 'F'

Project Manager:	ADF
Drawn By:	CAS
Checked By:	ADF
Project Number:	21375
Part of Section(s):	29,31,32
Township:	46 S Range: 27 E
County, State:	LEE COUNTY, FL

Status:
 FOR PERMITTING PURPOSES ONLY
 NOT FOR CONSTRUCTION

Sheet Number: 9

6/2/13/15 - CORNSCREW GROVE/BRPLAN SET/13/15-10-DET-DRAINING.DWG
 2/23/15 4:34 PM



DRAINAGE STRUCTURE TABLE	
(S2-5) 30" FLARED END - FDOT #270 INV. (30') = 20.00	(S2-9) VALLEY GUTTER INLET - SEE DETAIL E.O.P. ELEV. = 28.50 INV. NW (30') = 20.00 INV. SE (30') = 20.00
(S2-6) VALLEY GUTTER INLET - SEE DETAIL E.O.P. ELEV. = 28.50 INV. NW (30') = 20.00 INV. SE (30') = 20.00	(S2-10) 30" FLARED END - FDOT #270 INV. (30') = 20.00
(S2-7) VALLEY GUTTER INLET - SEE DETAIL E.O.P. ELEV. = 28.50 INV. NW (30') = 20.00 INV. SE (30') = 20.00	(S2-11) TYPE 'D' INLET - FDOT #232 GRATE ELEV. = 28.00 INV. N (30') = 20.00
(S2-8) VALLEY GUTTER INLET - SEE DETAIL E.O.P. ELEV. = 28.50 INV. NW (30') = 20.00 INV. SE (30') = 20.00	(C8-2) TYPE 'E' INLET - FDOT #232 GRATE ELEV. = 28.00 INV. S (30') = 20.00

DELISI FITZGERALD, INC.
 Planning - Engineering - Project Management
 1605 Hendry Street
 Fort Myers, FL 33901
 239-418-0691 • 239-418-0692 fax
 Florida Certificate of Authorization:
 Engineering, L.S. # 26976

ENGINEER OF RECORD:
 ANDREW D. FITZGERALD, P.E. (FOR THE FIRM)
 FLORIDA P.E. NO. 56776
 NOT VALID WITHOUT SEAL, SIGNATURE AND DATE

OWNER / DEVELOPER:
PAN TERRA HOLDINGS, LTD
 150 ALHAMBRA CIRCLE #925
 CORAL GABLES, FL 33134
 PROJECT:
VERDANA

PLAN REVISIONS	DESCRIPTION
#	DATE

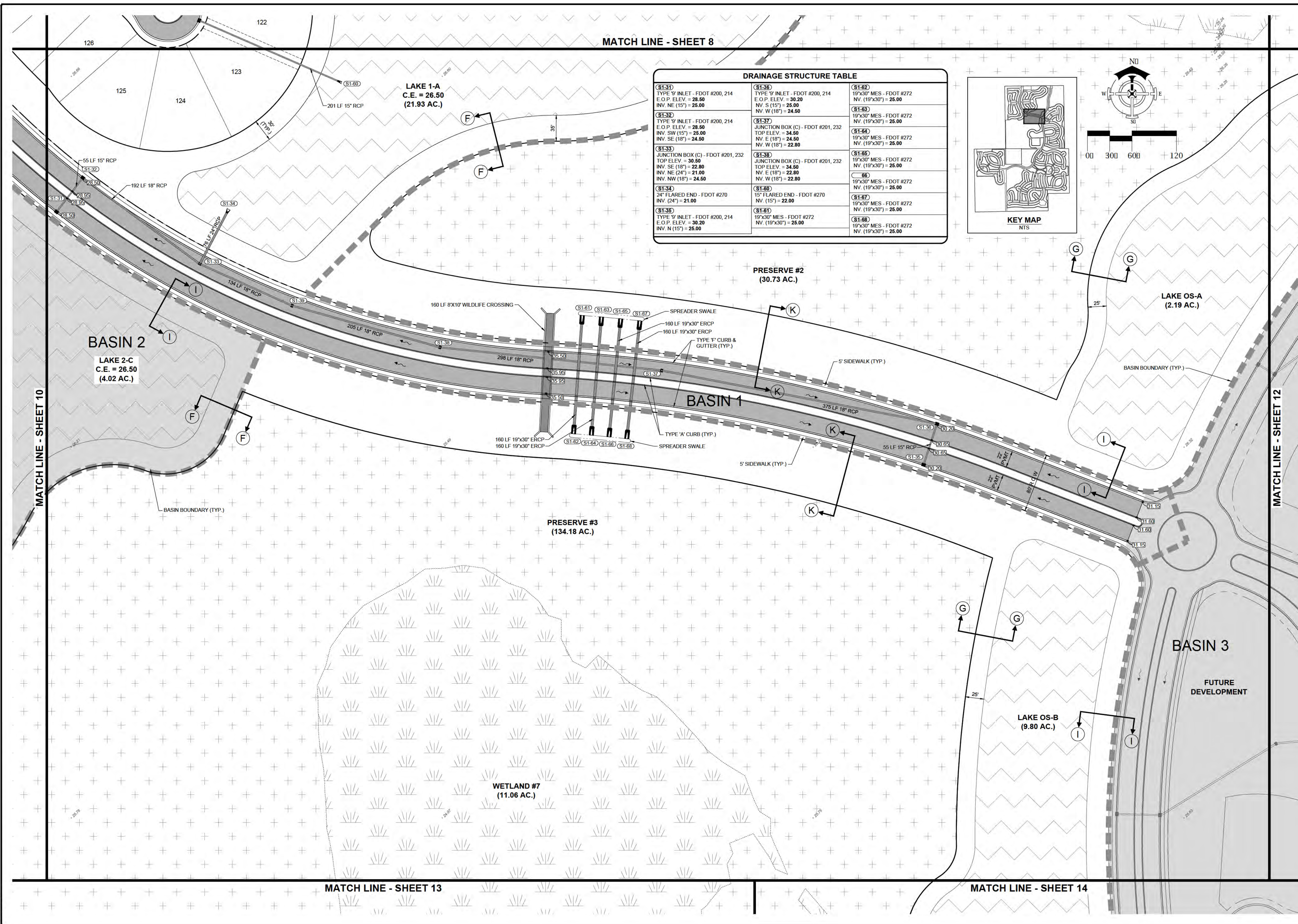
DETAILED DRAINAGE PLAN 'G'

Project Manager: ADF
 Drawn By: CAS
 Checked By: ADF
 Project Number: 21375
 Part of Section(s): 29.31.32
 Township: 46 S | Range: 27 E
 County, State: LEE COUNTY, FL

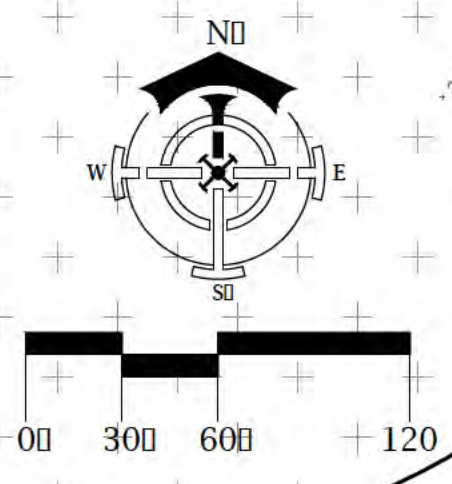
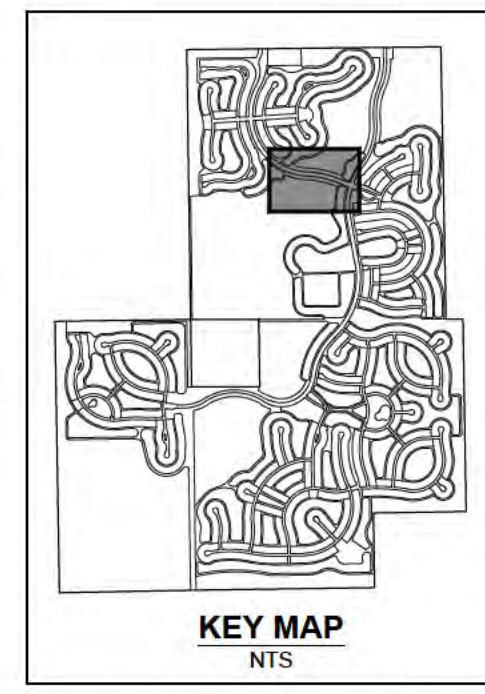
Status:
 FOR PERMITTING PURPOSES ONLY
 NOT FOR CONSTRUCTION

Sheet Number: 10

621375 - CORNSCREW GROVES/PLAN SET/21375-11-DET-DRAIN.H DWG
2/23/20 4:35 PM



DRAINAGE STRUCTURE TABLE		
(S1-31) TYPE 'W' INLET - FDOT #200, 214 E.O.P. ELEV. = 28.50 INV. NE (15') = 25.00	(S1-36) TYPE 'W' INLET - FDOT #200, 214 E.O.P. ELEV. = 30.20 INV. S (15') = 25.00 INV. W (18') = 24.50	(S1-62) 19'x30" MES - FDOT #272 NV. (19'x30") = 25.00
(S1-32) TYPE 'W' INLET - FDOT #200, 214 E.O.P. ELEV. = 28.50 INV. SW (15') = 25.00 INV. SE (15') = 24.50	(S1-37) JUNCTION BOX (C) - FDOT #201, 232 TOP ELEV. = 34.50 INV. E (18") = 24.50 INV. NW (18") = 22.80	(S1-63) 19'x30" MES - FDOT #272 NV. (19'x30") = 25.00
(S1-33) JUNCTION BOX (C) - FDOT #201, 232 TOP ELEV. = 30.50 INV. SE (18") = 22.80 INV. NE (24") = 21.00 INV. NW (18") = 24.50	(S1-38) JUNCTION BOX (C) - FDOT #201, 232 TOP ELEV. = 34.50 INV. E (18") = 24.50 INV. NW (18") = 22.80	(S1-64) 19'x30" MES - FDOT #272 NV. (19'x30") = 25.00
(S1-34) 24" FLARED END - FDOT #270 INV. (24") = 21.00	(S1-40) 15" FLARED END - FDOT #270 INV. (15") = 22.00	(S1-65) 19'x30" MES - FDOT #272 NV. (19'x30") = 25.00
(S1-35) TYPE 'W' INLET - FDOT #200, 214 E.O.P. ELEV. = 30.20 INV. N (15') = 25.00	(S1-67) 19'x30" MES - FDOT #272 NV. (19'x30") = 25.00	(S1-68) 19'x30" MES - FDOT #272 NV. (19'x30") = 25.00



DELISI FITZGERALD, INC.
Planning - Engineering - Project Management
1605 Hendry Street
Fort Myers, FL 33901
239-418-0691 • 239-418-0692 fax
Florida Certificate of Authorization:
Engineering, L.S. # 26976

ENGINEER OF RECORD:
ANDREW D. FITZGERALD, P.E. (FOR THE FIRM)
FLORIDA P.E. NO. 56776
NOT VALID WITHOUT SMALL, SIGNATURE AND DATE

OWNER / DEVELOPER:
PAN TERRA HOLDINGS, LTD
150 ALHAMBRA CIRCLE #925
CORAL GABLES, FL 33134

PROJECT:
VERDANA

PLAN REVISIONS	DESCRIPTION
#	DATE

DETAILED DRAINAGE PLAN 'H'

Project Manager: ADF
 Drawn By: CAS
 Checked By: ADF
 Project Number: 21375
 Part of Section(s): 29,31,32
 Township: 46 S | Range: 27 E
 County, State: LEE COUNTY, FL

Status:
FOR PERMITTING PURPOSES ONLY
NOT FOR CONSTRUCTION

Sheet Number: 11

MATCH LINE - SHEET 16

DRAINAGE STRUCTURE TABLE			
(S6-12) 30" FLARED END - FDOT #270 INV. (30") = 17.00	(S6-19) TYPE 'D' INLET - FDOT #232 GRATE ELEV. = 26.00 INV. N (30") = 17.00 INV. W (30") = 17.00 INV. E (18") = 17.00	(S6-23) VALLEY GUTTER INLET - SEE DETAIL E.O.P. ELEV. = 26.00 INV. E (30") = 17.00 INV. W (30") = 17.00	(S6-28) VALLEY GUTTER INLET - SEE DETAIL E.O.P. ELEV. = 26.00 INV. SE (30") = 17.00 INV. SW (30") = 17.00
(S6-13) VALLEY GUTTER INLET - SEE DETAIL E.O.P. ELEV. = 26.00 INV. E (30") = 17.00 INV. W (30") = 17.00	(S6-20) VALLEY GUTTER INLET - SEE DETAIL E.O.P. ELEV. = 26.00 INV. E (30") = 17.00 INV. W (30") = 17.00	(S6-24) 30" FLARED END - FDOT #270 INV. (30") = 17.00	(S6-30) 30" FLARED END - FDOT #270 INV. (30") = 17.00
(S6-14) VALLEY GUTTER INLET - SEE DETAIL E.O.P. ELEV. = 26.00 INV. E (30") = 17.00 INV. W (30") = 17.00	(S6-21) VALLEY GUTTER INLET - SEE DETAIL E.O.P. ELEV. = 26.00 INV. E (30") = 17.00 INV. W (30") = 17.00	(S6-25) 30" FLARED END - FDOT #270 INV. (30") = 17.00	(S6-31) TYPE 'D' INLET - FDOT #232 GRATE ELEV. = 26.00 INV. SE (30") = 15.00
(S6-16) 30" FLARED END - FDOT #270 INV. (30") = 17.00	(S6-22) VALLEY GUTTER INLET - SEE DETAIL E.O.P. ELEV. = 26.00 INV. E (30") = 17.00 INV. W (30") = 17.00	(S6-26) TYPE 'D' INLET - FDOT #232 GRATE ELEV. = 26.00 INV. N (30") = 17.00 INV. S (30") = 17.00	(S6-8) TYPE 'E' INLET - FDOT #232 GRATE ELEV. = 26.14 INV. NW (30") = 15.00
(S6-17) 30" FLARED END - FDOT #270 INV. (30") = 17.00	(S6-27) 30" FLARED END - FDOT #270 INV. (30") = 17.00	(S6-28) VALLEY GUTTER INLET - SEE DETAIL E.O.P. ELEV. = 26.00 INV. SE (30") = 17.00 INV. NW (30") = 17.00	
(S6-18) TYPE 'D' INLET - FDOT #232 GRATE ELEV. = 26.00 INV. S (30") = 17.00 INV. NE (30") = 17.00			

WETLAND #10
(0.78 AC.)

WETLAND #11
(5.22 AC.)

PRESERVE #5
(47.27 AC.)

LAKE 6-B
C.E. = 23.50
(11.90 AC.)

LAKE 6-A
C.E. = 23.50

LAKE 6-D
C.E. = 23.50
(3.16 AC.)

LAKE 6-C
C.E. = 23.50
(2.57 AC.)

LAKE 7-A
C.E. = 22.50
(11.00 AC.)

LAKE 7-C
C.E. = 22.50
(9.27 AC.)

BASIN 7

BASIN 6

FUTURE DEVELOPMENT

FUTURE DEVELOPMENT

FUTURE DEVELOPMENT

FUTURE DEVELOPMENT

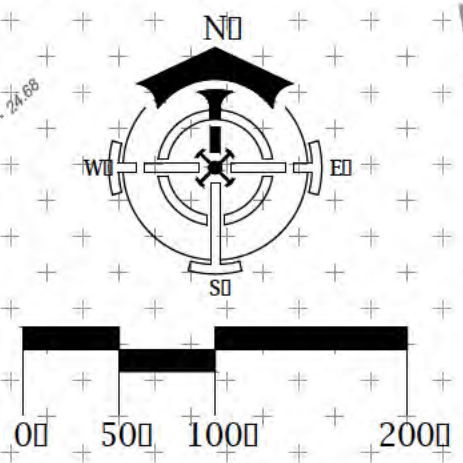
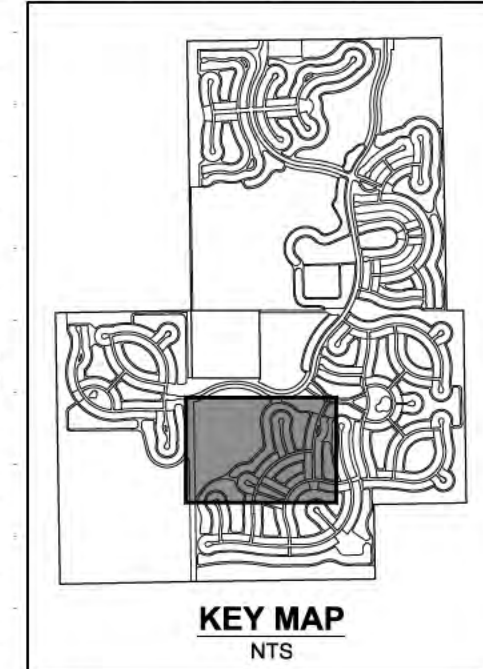
FUTURE DEVELOPMENT

EX. 25' DRAINAGE RESERVATION
EX. 50' DRAINAGE EASEMENT
EX. 30' ACCESS AND UTILITY EASEMENT

SPREADER SWALE
SEE DETAIL

BASIN BOUNDARY (TYP.)

BASIN BOUNDARY (TYP.)



MATCH LINE - SHEET 18

MATCH LINE - SHEET 20

MATCH LINE - SHEET 21

MATCH LINE - SHEET 22

6/2/2016 - CORNSCREW GROVES/PLAN SET/1375-19-DET-DRAIN.P.DWG
2:23:04 PM

DELISI FITZGERALD, INC.
 Planning - Engineering - Project Management
 1605 Hendry Street
 Fort Myers, FL 33901
 239-418-0691 • 239-418-0692 fax
 Florida Certificate of Authorization:
 Engineering, L.S. # 26976

ENGINEER OF RECORD:
 ANDREW D. FITZGERALD, P.E. (FOR THE FIRM)
 FLORIDA P.E. NO. 56776
 NOT VALID WITHOUT SEAL, SIGNATURE AND DATE

OWNER / DEVELOPER:
PAN TERRA HOLDINGS, LTD
 150 ALHAMBRA CIRCLE #925
 CORAL GABLES, FL 33134

PROJECT:
VERDANA

PLAN REVISIONS	DESCRIPTION
#	DATE

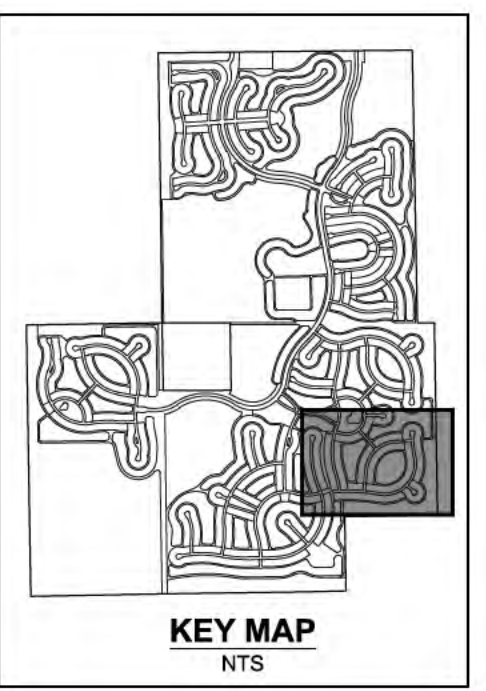
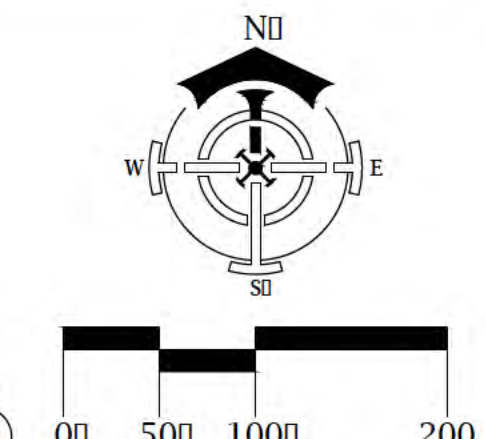
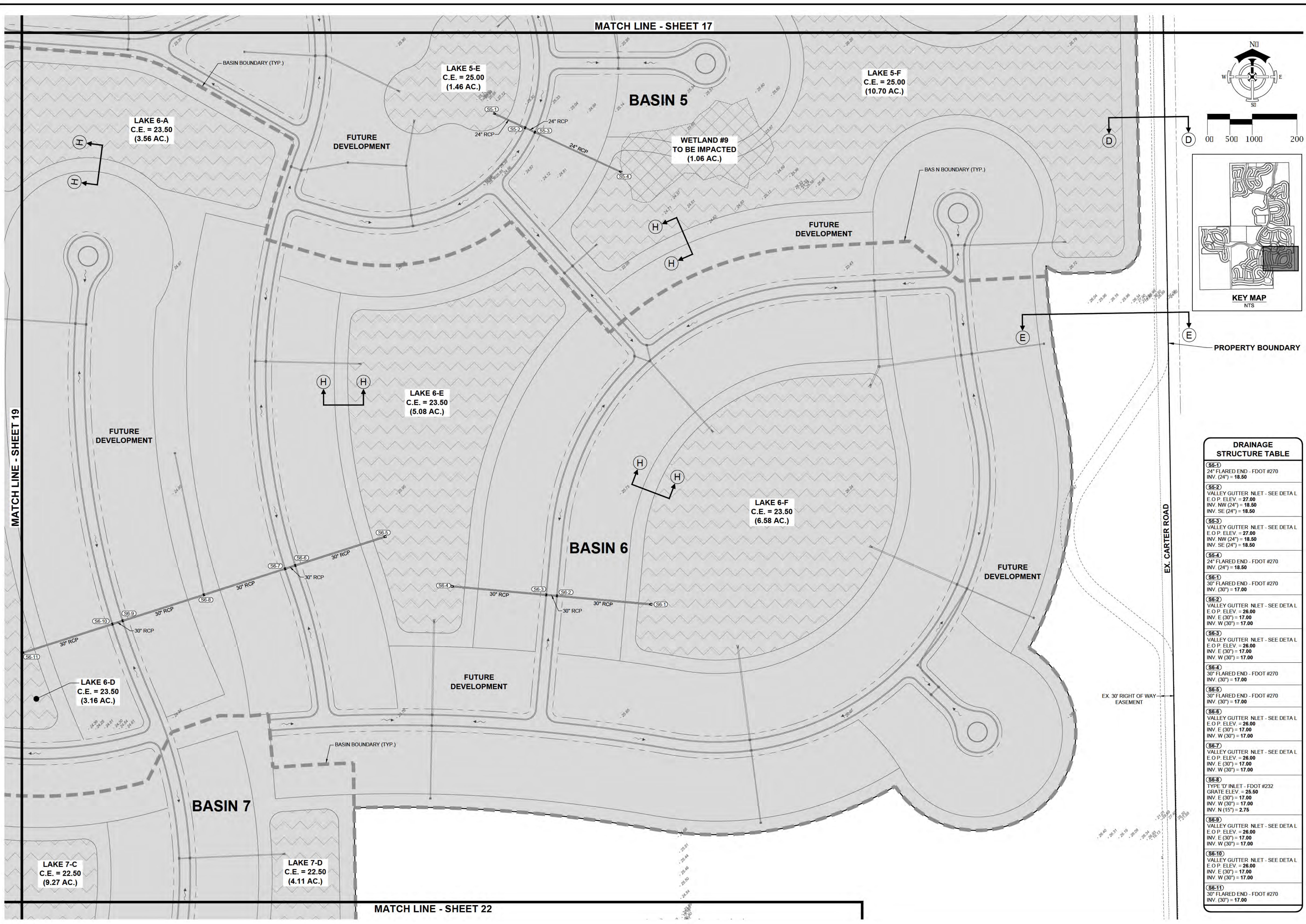
DETAILED DRAINAGE PLAN 'P'

Project Manager:	ADF
Drawn By:	CAS
Checked By:	ADF
Project Number:	21375
Part of Section(s):	29,31,32
Towship:	46 S Range:
County, State:	LEE COUNTY, FL

Status:
FOR PERMITTING PURPOSES ONLY
NOT FOR CONSTRUCTION

Sheet Number: 19

02.1375 - CORNSCREW GROVES/PLAN SET/21375-20-DET-DRAINING.DWG
22.02.19 4:54 PM



DRAINAGE STRUCTURE TABLE

(S8-1)	24" FLARED END - FDOT #270 INV. (24") = 18.50
(S8-2)	VALLEY GUTTER NLET - SEE DETAIL E.O.P. ELEV. = 27.00 INV. NW (24") = 18.50 INV. SE (24") = 18.50
(S8-3)	VALLEY GUTTER NLET - SEE DETAIL E.O.P. ELEV. = 27.00 INV. NW (24") = 18.50 INV. SE (24") = 18.50
(S8-4)	24" FLARED END - FDOT #270 INV. (24") = 18.50
(S8-7)	30" FLARED END - FDOT #270 INV. (30") = 17.00
(S8-2)	VALLEY GUTTER NLET - SEE DETAIL E.O.P. ELEV. = 26.00 INV. E (30") = 17.00 INV. W (30") = 17.00
(S8-3)	VALLEY GUTTER NLET - SEE DETAIL E.O.P. ELEV. = 26.00 INV. E (30") = 17.00 INV. W (30") = 17.00
(S8-4)	30" FLARED END - FDOT #270 INV. (30") = 17.00
(S8-5)	30" FLARED END - FDOT #270 INV. (30") = 17.00
(S8-6)	VALLEY GUTTER NLET - SEE DETAIL E.O.P. ELEV. = 26.00 INV. E (30") = 17.00 INV. W (30") = 17.00
(S8-7)	VALLEY GUTTER NLET - SEE DETAIL E.O.P. ELEV. = 26.00 INV. E (30") = 17.00 INV. W (30") = 17.00
(S8-8)	TYPE 'D' INLET - FDOT #232 GRATE ELEV. = 25.50 INV. E (30") = 17.00 INV. W (30") = 17.00 INV. N (15") = 2.75
(S8-9)	VALLEY GUTTER NLET - SEE DETAIL E.O.P. ELEV. = 26.00 INV. E (30") = 17.00 INV. W (30") = 17.00
(S8-10)	VALLEY GUTTER NLET - SEE DETAIL E.O.P. ELEV. = 26.00 INV. E (30") = 17.00 INV. W (30") = 17.00
(S8-11)	30" FLARED END - FDOT #270 INV. (30") = 17.00

DELISI FITZGERALD, INC.
Planning - Engineering - Project Management
1605 Hendry Street
Fort Myers, FL 33901
239-418-0691 • 239-418-0692 fax
Florida Certificate of Authorization:
Engineering, L.S. # 26976

ENGINEER OF RECORD:
ANDREW D. FITZGERALD, P.E. (FOR THE FIRM)
FLORIDA P.E. NO. 56776
NOT VALID WITHOUT SEAL, SIGNATURE AND DATE

OWNER / DEVELOPER:
PAN TERRA HOLDINGS, LTD
150 ALHAMBRA CIRCLE #925
CORAL GABLES, FL 33134
VERDANA
PROJECT:

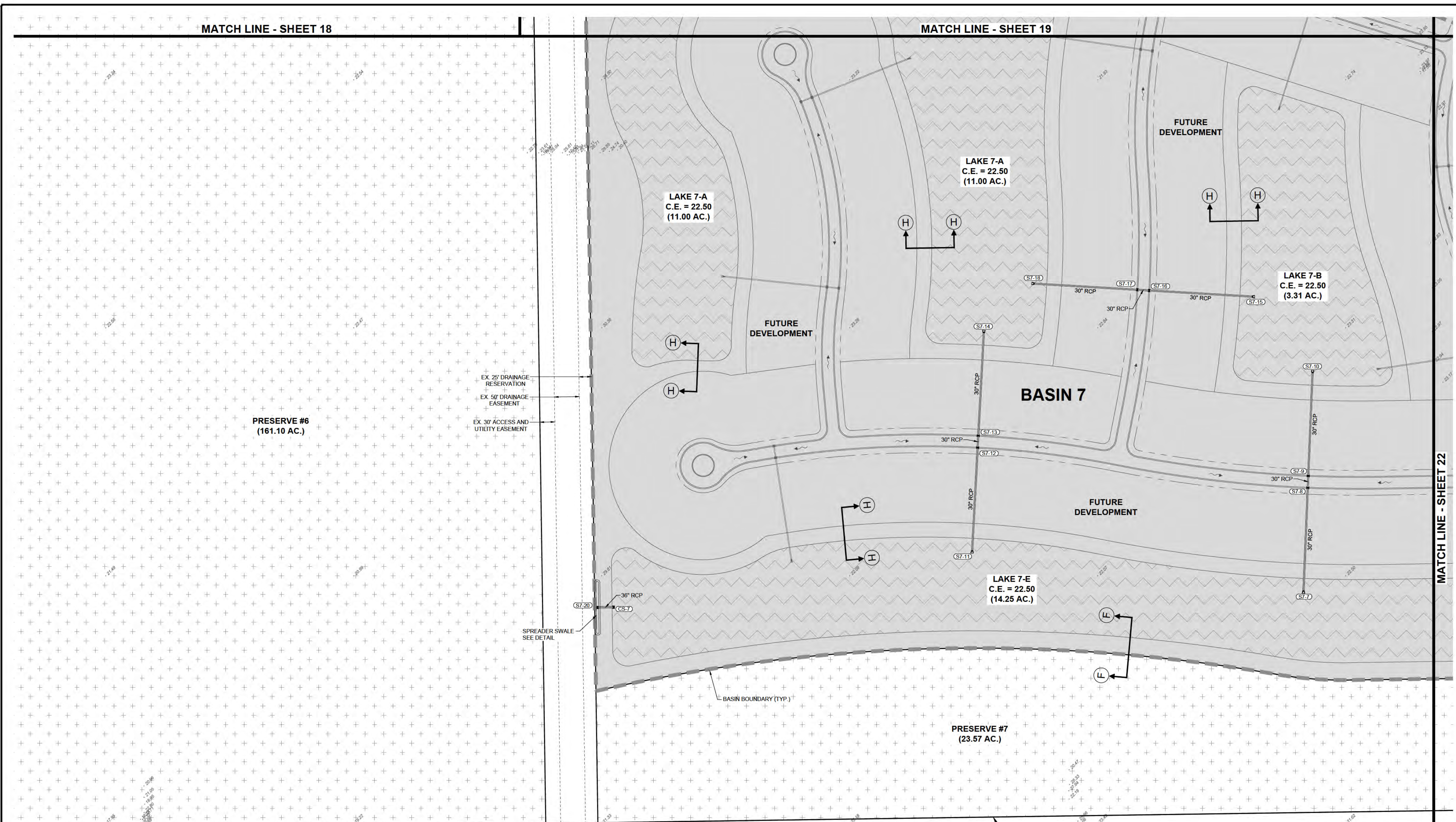
PLAN REVISIONS	DESCRIPTION
#	DATE

DETAILED DRAINAGE PLAN 'Q'

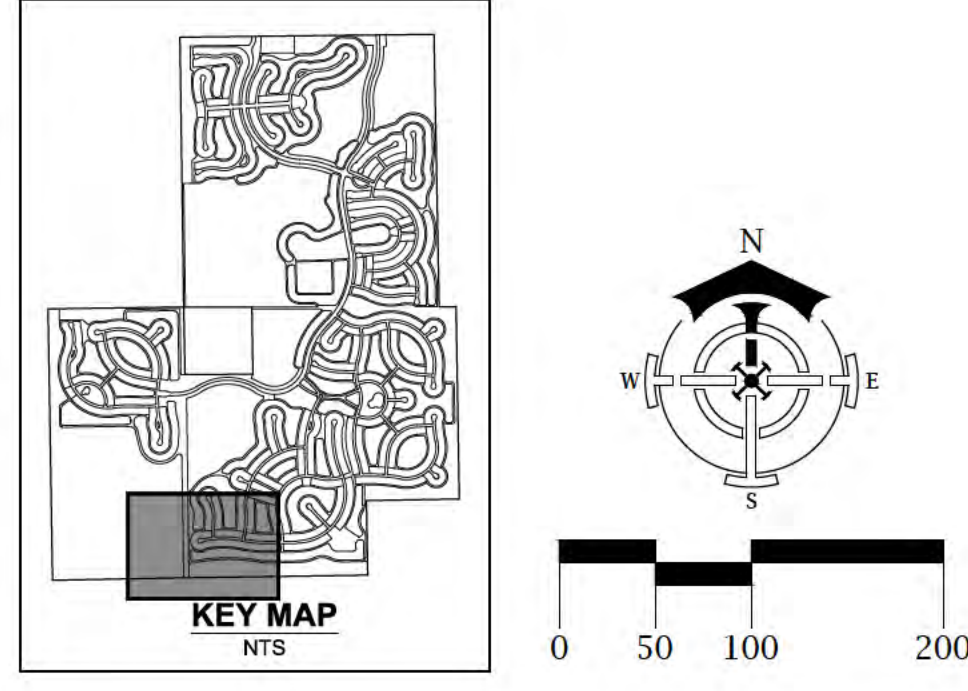
Project Manager:	ADF
Drawn By:	CAS
Checked By:	ADF
Project Number:	21375
Part of Section(s):	29,31,32
Township:	46 S Range:
County, State:	LEE COUNTY, FL

Status:
FOR PERMITTING PURPOSES ONLY
NOT FOR CONSTRUCTION
Sheet Number: 20

621375 - CORNSCREW GROVES/PLAN SET/1375-21-DET/DMNR.DWG
 02/23/10 4:54 PM



DRAINAGE STRUCTURE TABLE			
(S7-7) 30" FLARED END - FDOT #270 INV. (30") = 16.00	(S7-12) VALLEY GUTTER INLET - SEE DETAIL E.O.P. ELEV. = 24.50 INV. N (30") = 16.00 INV. S (30") = 16.00	(S7-16) VALLEY GUTTER INLET - SEE DETAIL E.O.P. ELEV. = 24.50 INV. E (30") = 16.00 INV. W (30") = 16.00	(S7-20) TYPE D INLET - FDOT #232 GRATE ELEV. = 21.00 INV. E (30") = 16.00
(S7-8) VALLEY GUTTER INLET - SEE DETAIL E.O.P. ELEV. = 24.50 INV. N (30") = 16.00 INV. S (30") = 16.00	(S7-13) VALLEY GUTTER INLET - SEE DETAIL E.O.P. ELEV. = 24.50 INV. S (30") = 16.00 INV. N (30") = 16.00	(S7-17) VALLEY GUTTER INLET - SEE DETAIL E.O.P. ELEV. = 24.50 INV. E (30") = 16.00 INV. W (30") = 16.00	(S7-7) TYPE "E" INLET - FDOT #232 GRATE ELEV. = 24.15 INV. W (30") = 16.00
(S7-9) VALLEY GUTTER INLET - SEE DETAIL E.O.P. ELEV. = 24.50 INV. N (30") = 16.00 INV. S (30") = 16.00	(S7-14) 30" FLARED END - FDOT #270 INV. (30") = 16.00	(S7-18) 30" FLARED END - FDOT #270 INV. (30") = 16.00	
(S7-10) 30" FLARED END - FDOT #270 INV. (30") = 16.00			



DELISI FITZGERALD, INC.
 Planning - Engineering - Project Management
 1605 Hendry Street
 Fort Myers, FL 33901
 239-418-0691 • 239-418-0692 fax
 Florida Certificate of Authorization:
 Engineering, L.S. # 26976

ENGINEER OF RECORD:
 ANDREW D. FITZGERALD, P.E. (FOR THE FIRM)
 FLORIDA P.E. NO. 56776
 NOT VALID WITHOUT SEAL, SIGNATURE AND DATE

OWNER / DEVELOPER:
PAN TERRA HOLDINGS, LTD
 150 ALHAMBRA CIRCLE #925
 CORAL GABLES, FL 33134

VERDANA

PLAN REVISIONS	DESCRIPTION
#	
DATE	

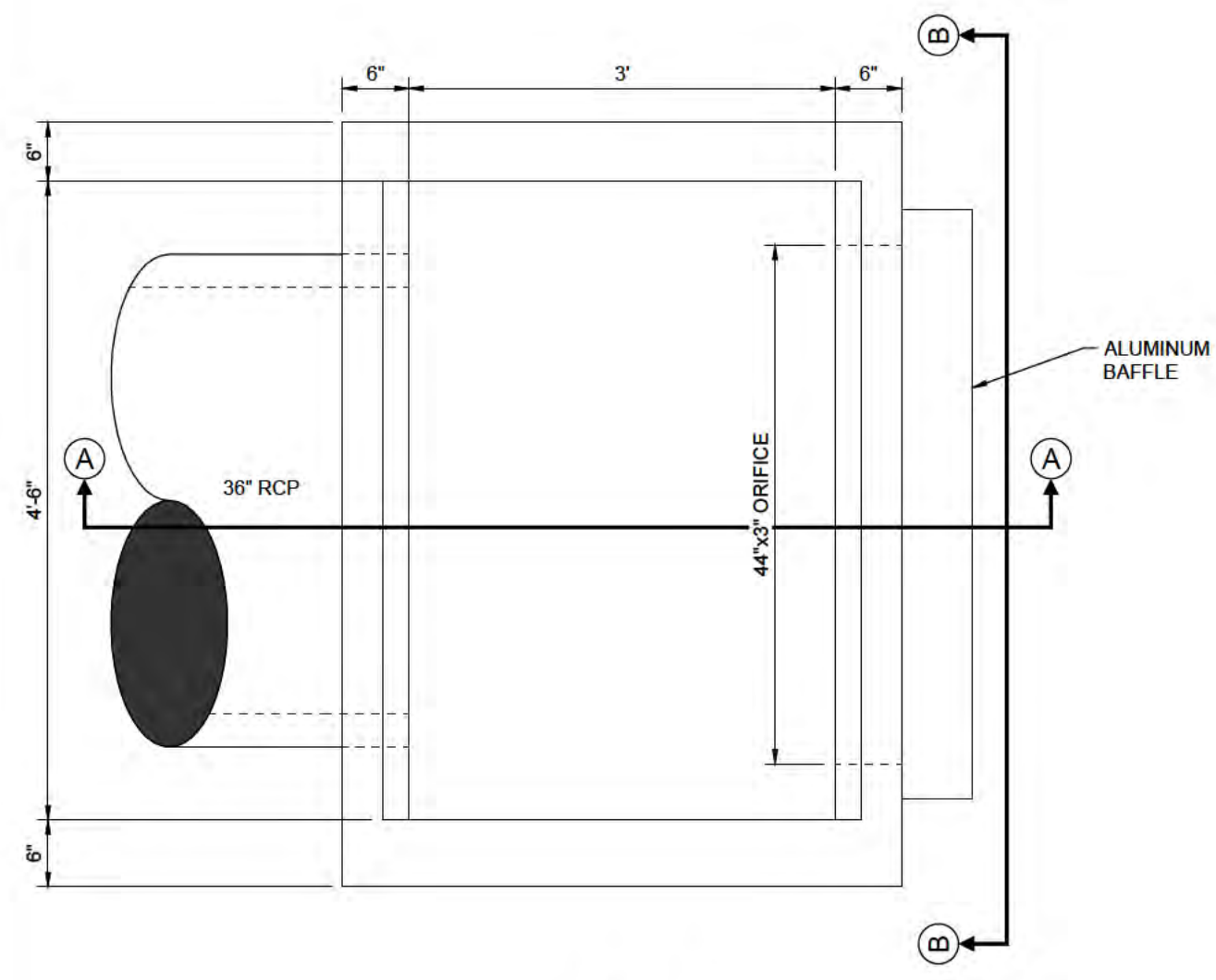
DETAILED DRAINAGE PLAN 'R'

Project Manager: ADF
 Drawn By: CAS
 Checked By: ADF
 Project Number: 21375
 Part of Section(s): 29, 31, 32
 Township: 46 S | Range: 27 E
 County, State: LEE COUNTY, FL

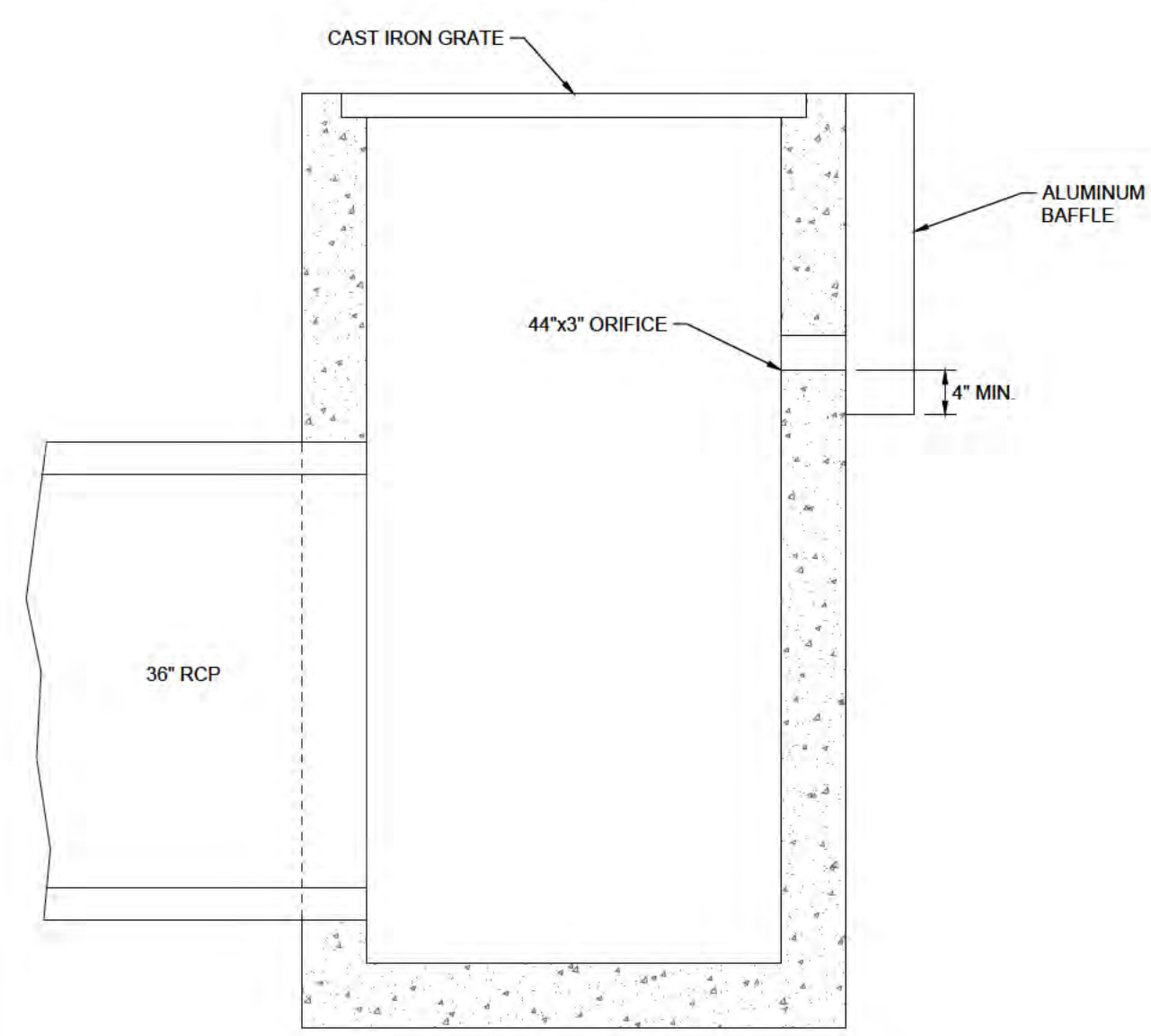
Status:
 FOR PERMITTING PURPOSES ONLY
 NOT FOR CONSTRUCTION

Sheet Number: 21

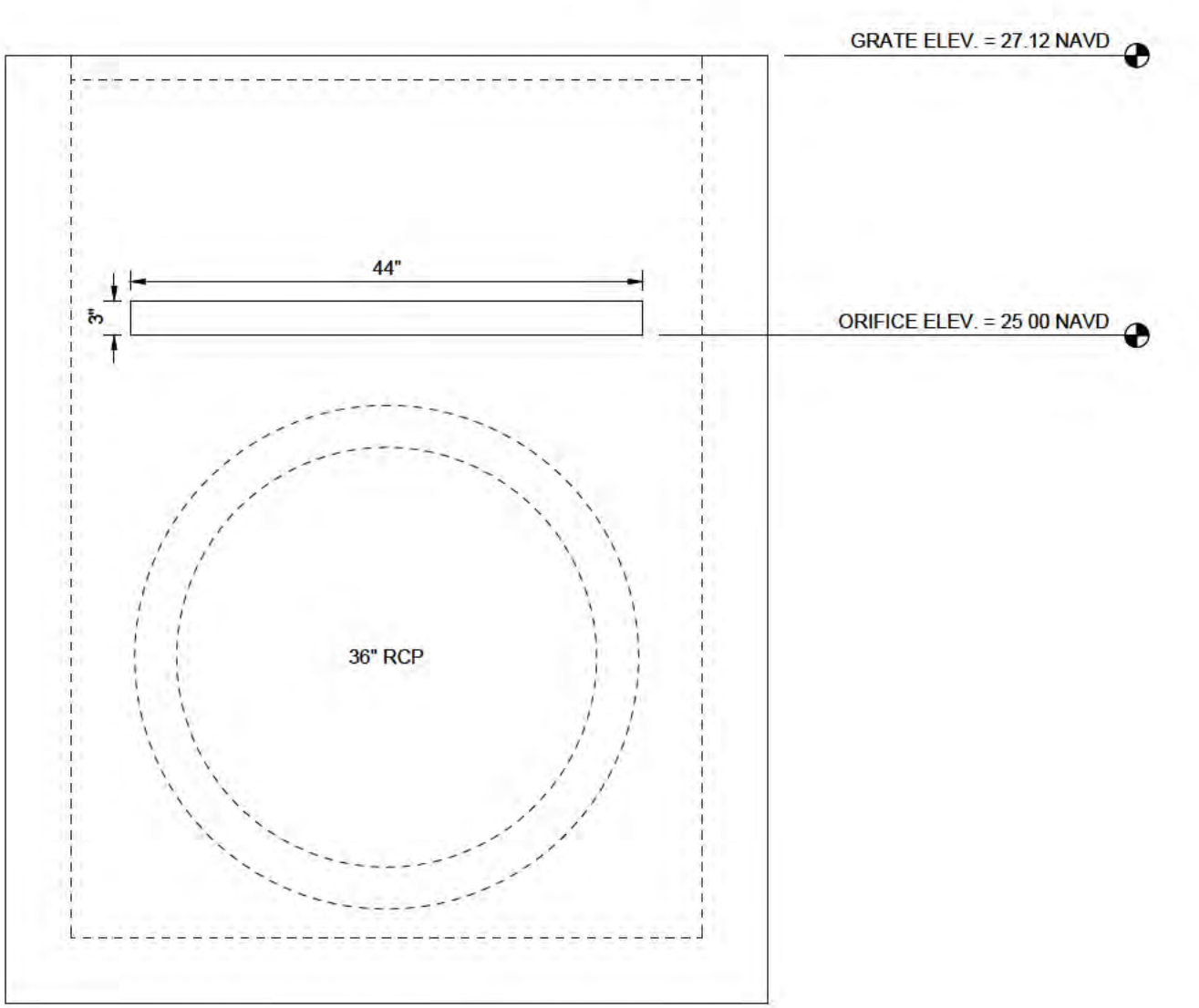
6/2/13/75 - CORNERS/REVIEW GROVES/PLAN SET/21375-27-CONT-STRUC.DWG
 2/23/10 4:41 PM



PLAN

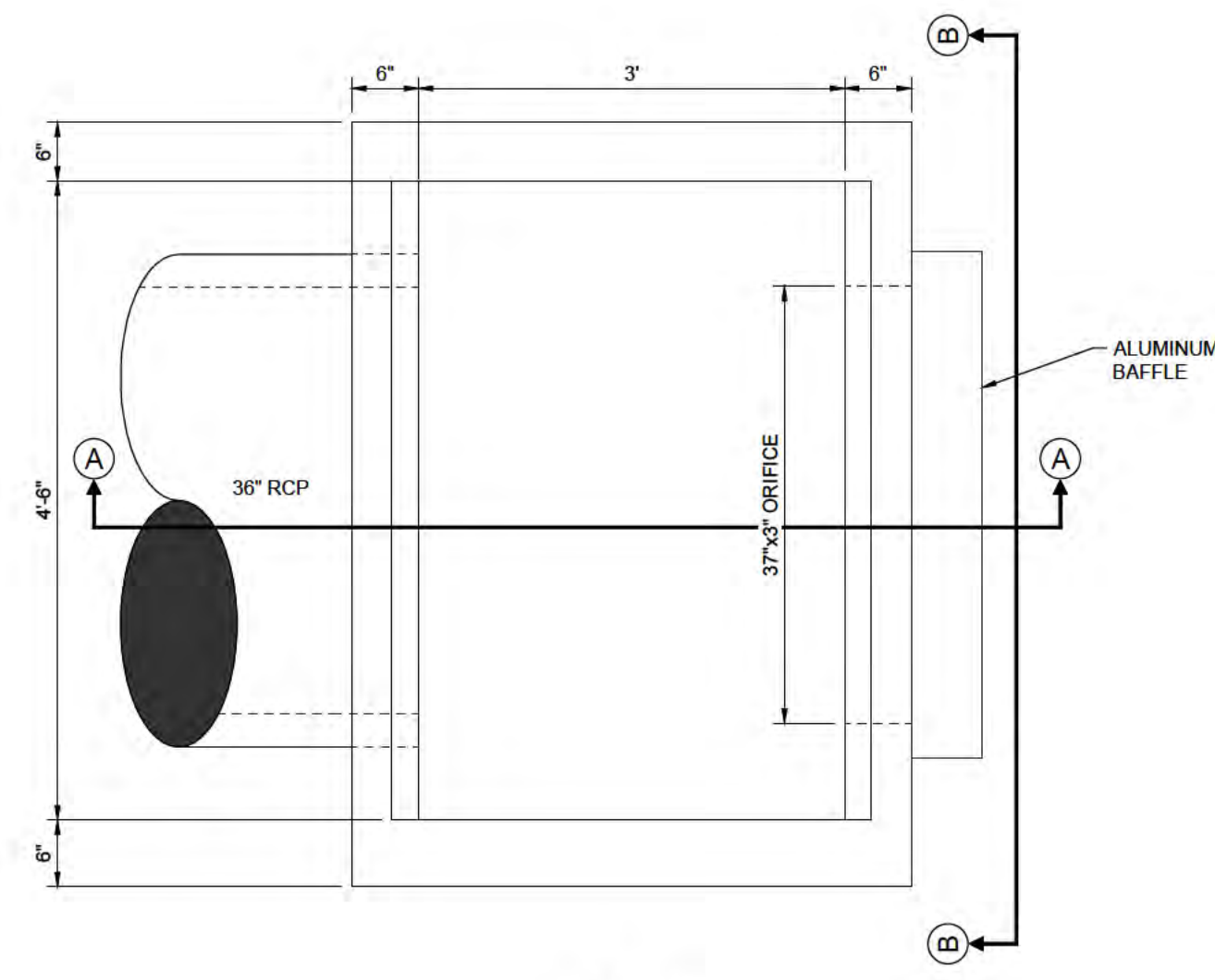


SECTION A-A

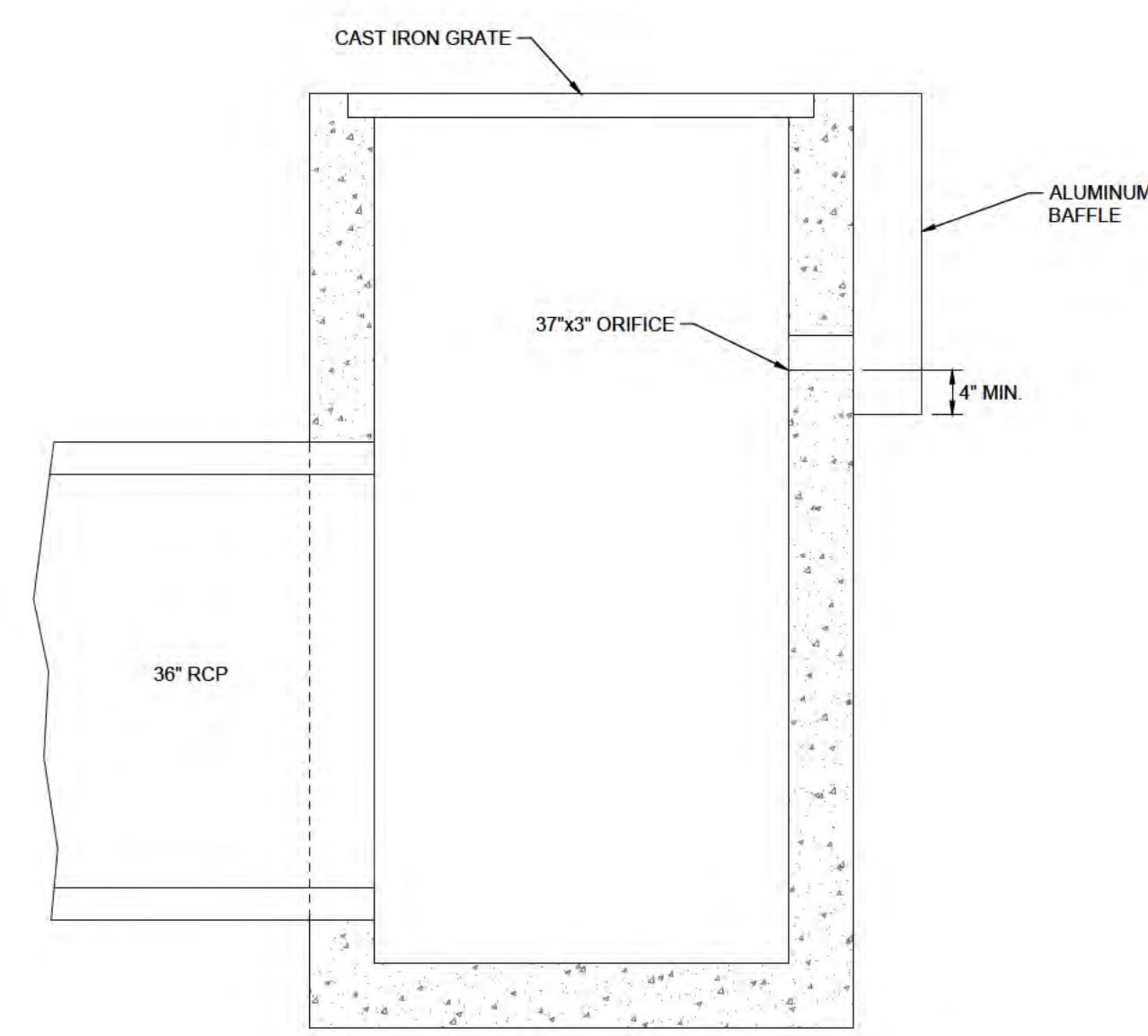


SECTION B-B

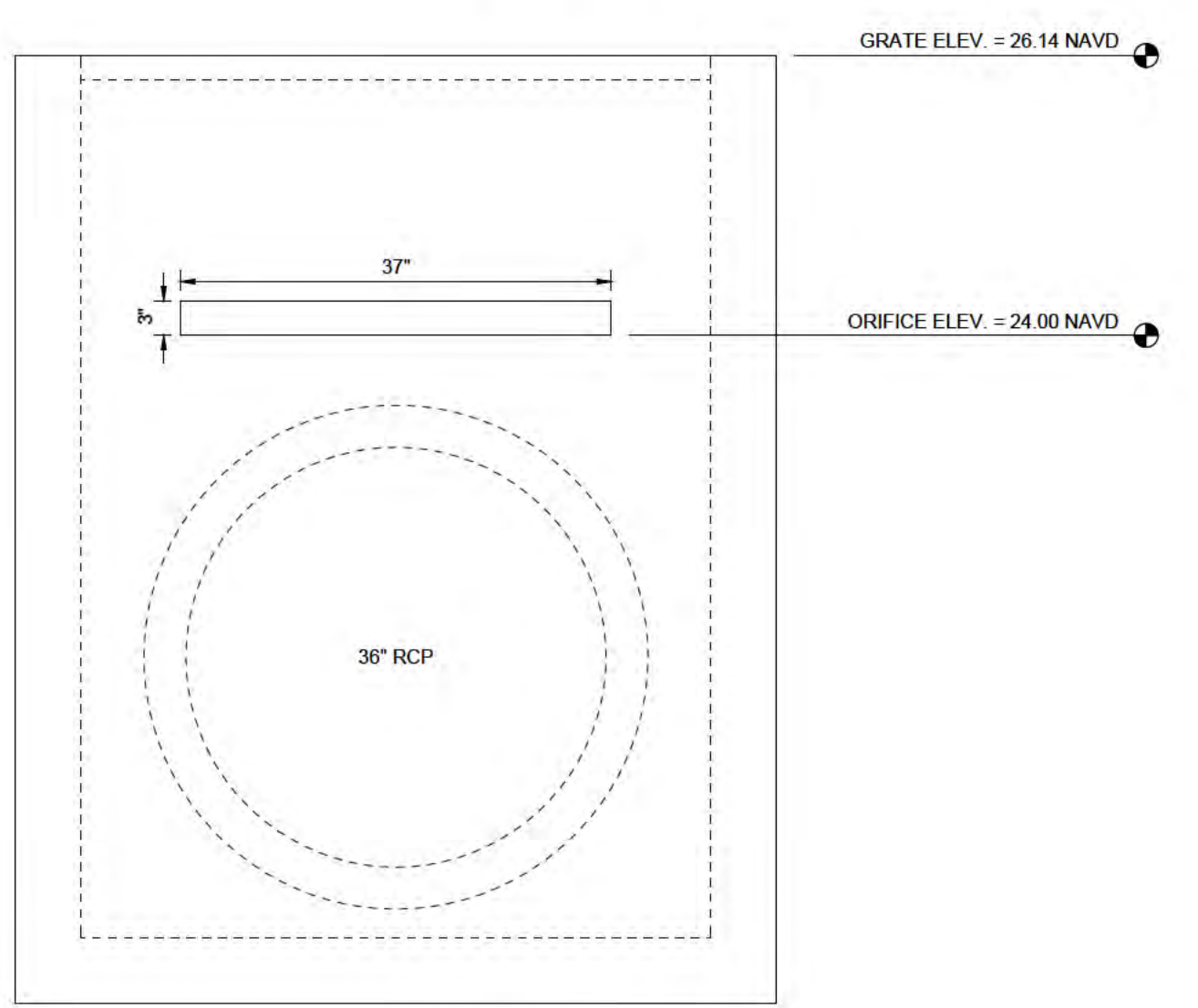
CS-5
MODIFIED FDOT TYPE 'E' INLET
 NTS



PLAN

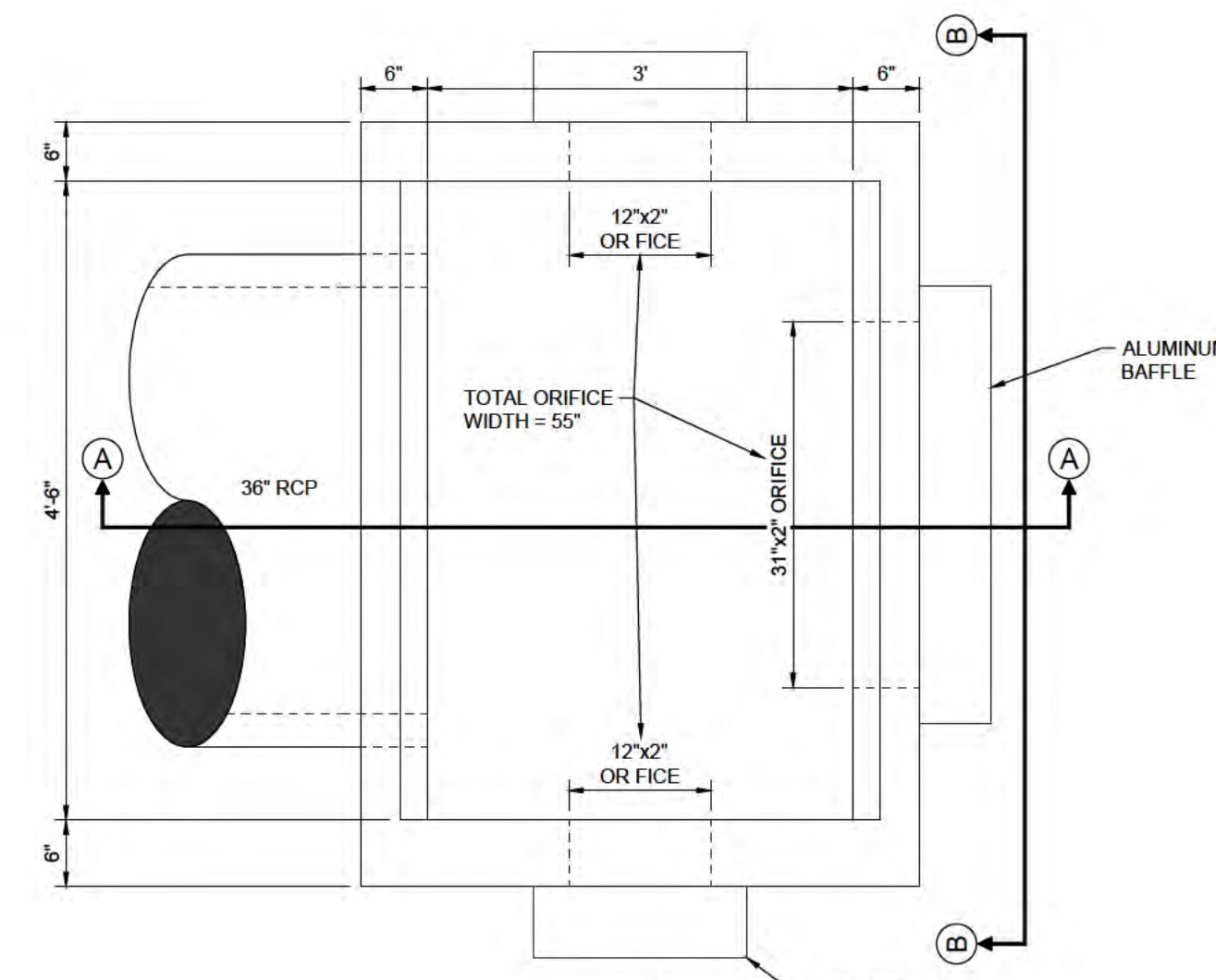


SECTION A-A

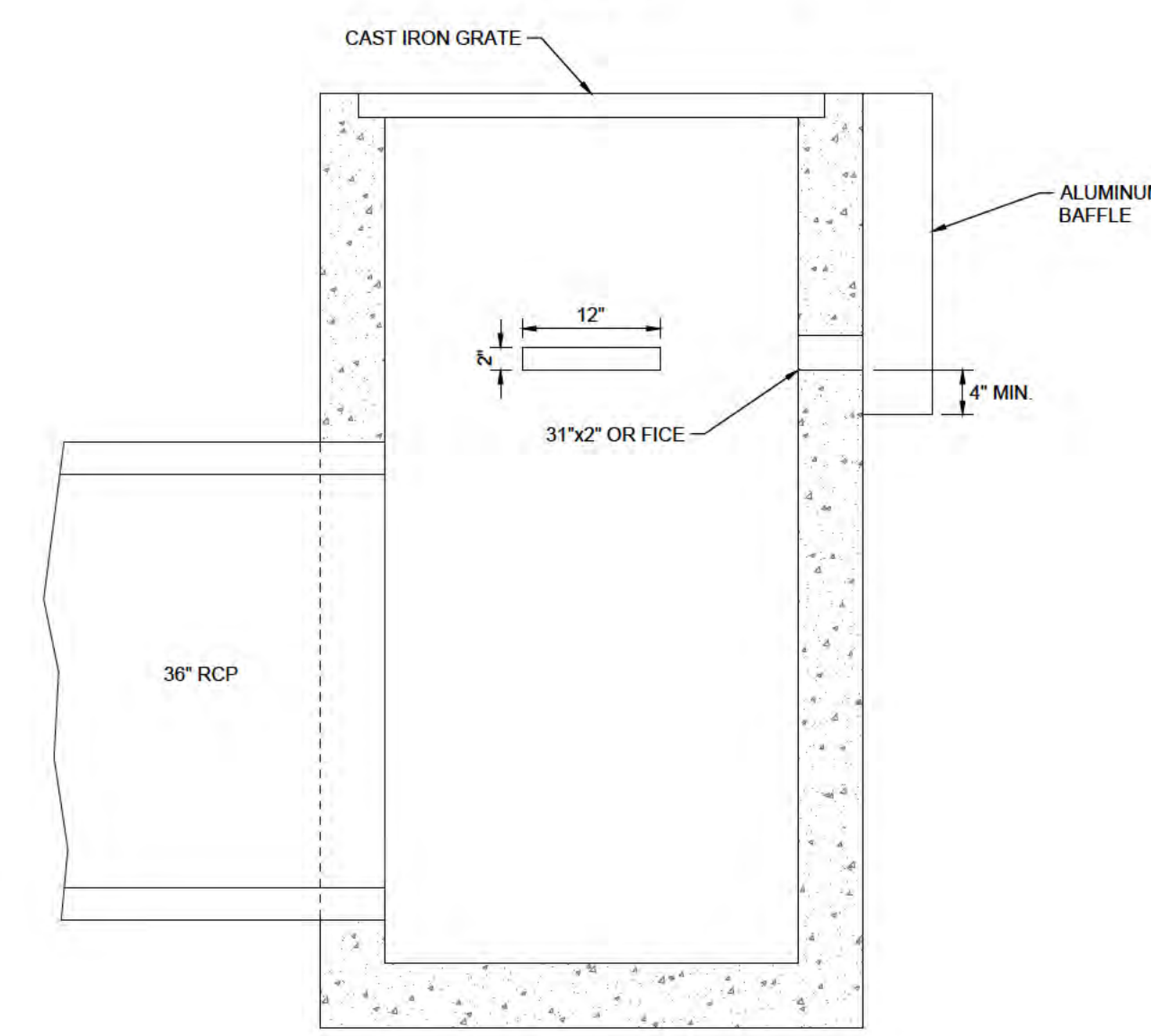


SECTION B-B

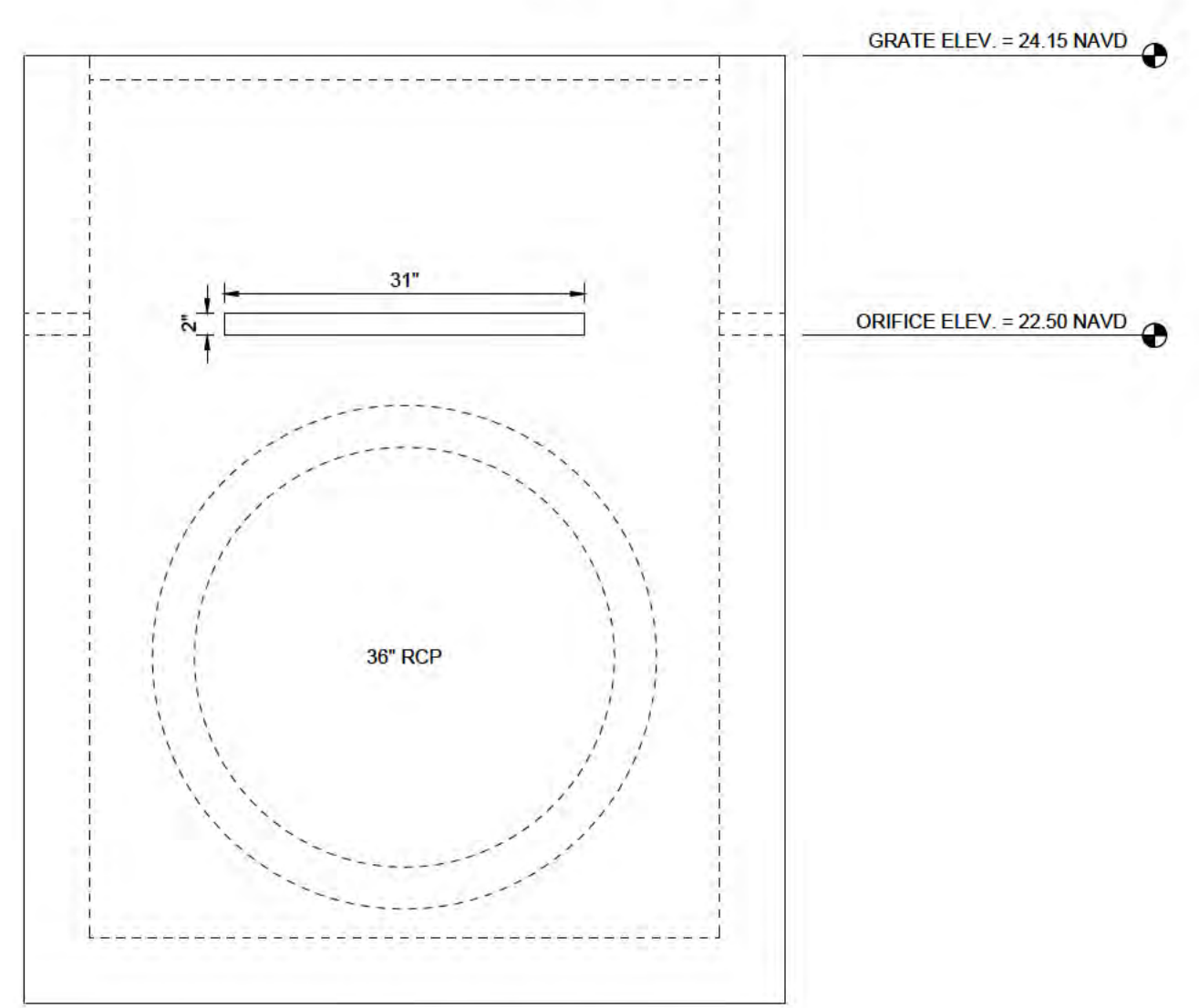
CS-6
MODIFIED FDOT TYPE 'E' INLET
 NTS



PLAN

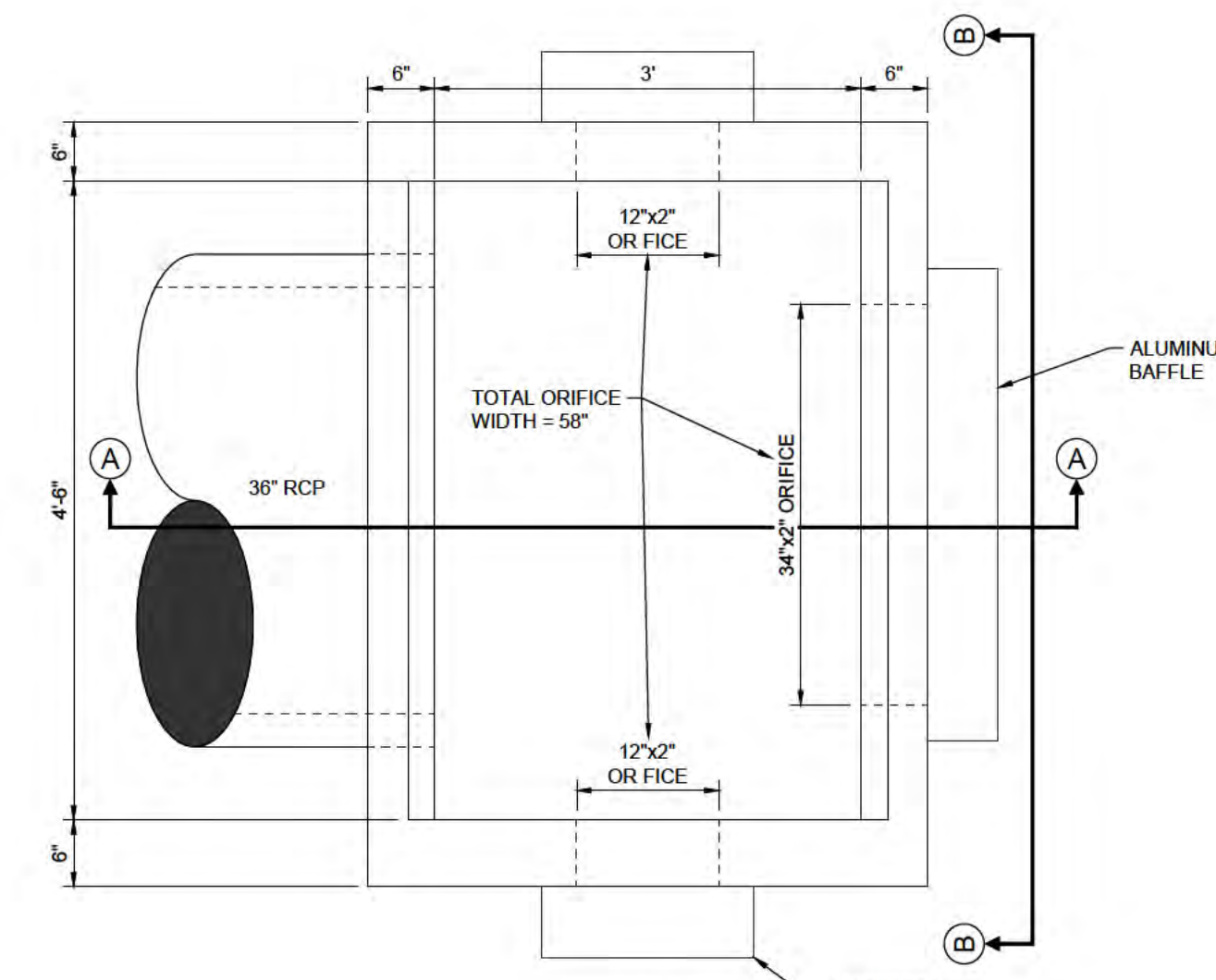


SECTION A-A

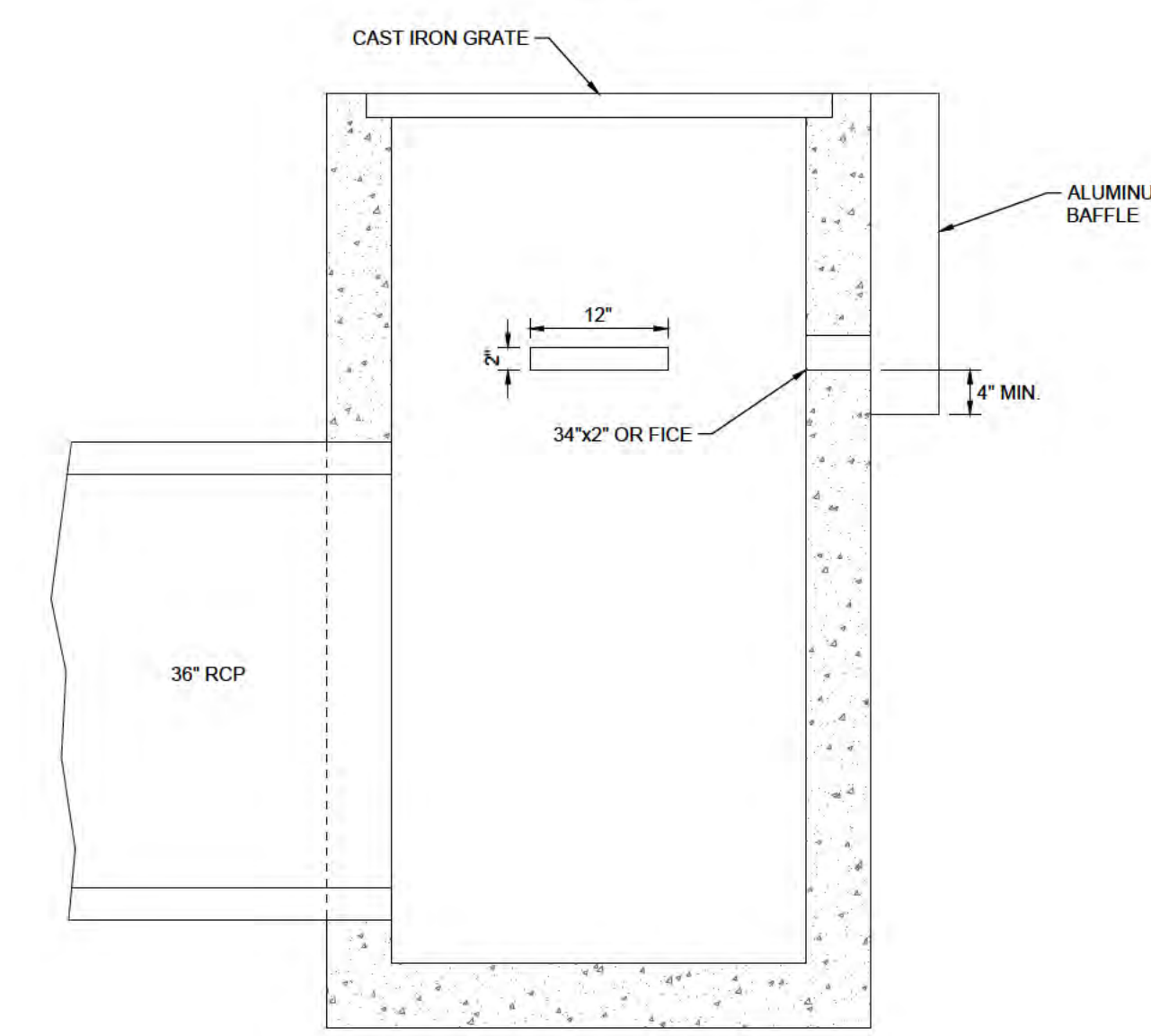


SECTION B-B

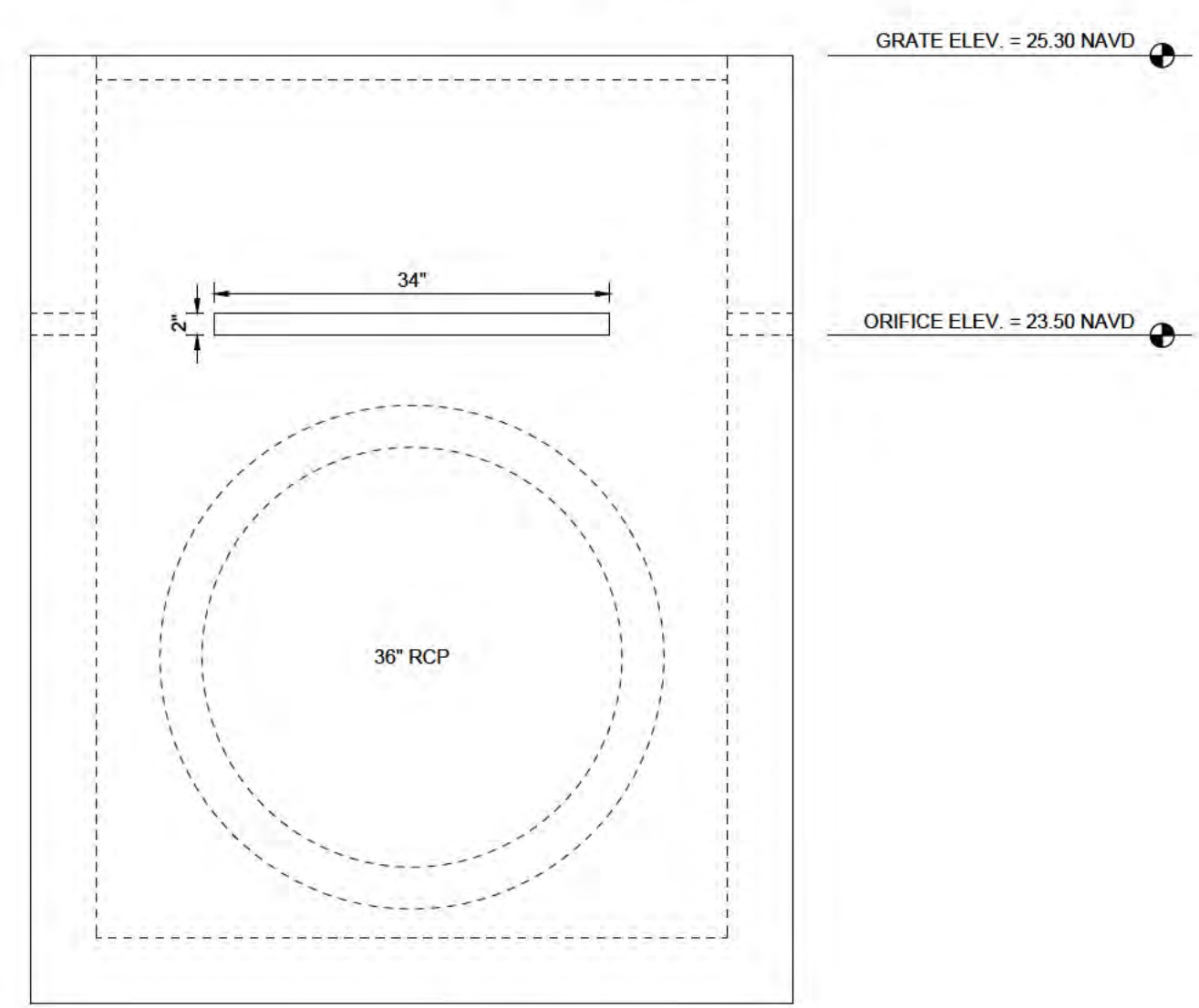
CS-7
MODIFIED FDOT TYPE 'E' INLET
 NTS



PLAN



SECTION A-A



SECTION B-B

CS-8
MODIFIED FDOT TYPE 'E' INLET
 NTS

DELISI FITZGERALD, INC.
 Planning - Engineering - Project Management
 1605 Hendry Street
 Fort Myers, FL 33901
 239-418-0691 • 239-418-0692 fax
 Florida Certificate of Authorization:
 Engineering, L.S. # 26976

ENGINEER OF RECORD:
 ANDREW D. FITZGERALD, P.E. (FOR THE FIRM)
 FLORIDA P.E. NO. 56776
 NOT VALID WITHOUT SEAL, SIGNATURE AND DATE

OWNER / DEVELOPER:
PAN TERRA HOLDINGS, LTD
 150 ALHAMBRA CIRCLE #925
 CORAL GABLES, FL 33134
 PROJECT:
VERDANA

PLAN REVISIONS	DESCRIPTION
#	
DATE	

CONTROL STRUCTURE DETAILS

Project Manager:	ADF
Drawn By:	CAS
Checked By:	ADF
Project Number:	21375
Part of Section(s):	29,31,32
Township:	46 S Range: 27 E
County, State:	LEE COUNTY, FL

Status:
 FOR PERMITTING PURPOSES ONLY
 NOT FOR CONSTRUCTION

